

SUGAR SCOOP

Enriching life in the Sugar Springs Community

September/October 2019



In This Issue

| | |
|-----------------------|----|
| SSPOA News | 2 |
| The Hearth Restaurant | 28 |
| A&E News | 31 |
| Camping | 33 |
| Golf | 36 |
| Lakes | 38 |
| Recreation | 52 |
| Butman Township News | 62 |
| Area Happenings | 65 |
| Our Advertisers | 67 |





Enjoy fast, free WI FII access at the

- * **Hearth Restaurant,**
- * **Pro Shop,**
- * **Activity Center**
- * **Activity Building**
- * **The Chalet & Campground**

Sugar Springs Campground

OPEN YEAR ROUND

We are now taking camping reservations for the Campground by telephone at (989) 426-4232. Please let your friends and family know they have this option to ensure that a camping spot will be waiting for them. They can secure their reservation by paying for their entire stay as much as a year in advance. Propane, campfire wood and bags of ice are available for purchase at the Campground.

CAMPGROUND FEES

| | Daily | Weekly | Monthly | Group Daily* |
|-----------|---------|----------|----------|--------------|
| Members | \$18.00 | \$105.00 | \$350.00 | \$16.00 |
| Guest | \$20.00 | \$118.00 | \$390.00 | \$17.00 |
| Public | \$21.00 | \$126.00 | \$465.00 | \$18.00 |
| Surcharge | \$11.00 | \$42.00 | \$132.00 | \$11.00 |

From Dec. 1st thru Feb. 28th a surcharge will be added to the above fees

Find Us On Facebook

Sugar Springs Airpark



[Click Here](#)

Sugar Springs Camping



[Click Here](#)

Sugar Springs Property Owners Association

Official Facebook Page



[Click Here](#)

The Hearth Restaurant & Pub



[Click Here](#)

Sugar Springs Golf Club



[Click Here](#)



SSPOA NEWS

From the Board of Directors

Open letter to Sugar Springs Member This communication is for Sugar Springs Property Owners Association members and cannot be reproduced/ pasted or shared to social media

Fall is upon us. I want to thank each and every member who attended our recent Informational Town Hall. A count shows that approximately 175 members were on hand to hear how the monies were spent over the last five years for capitol improvements as well as the Board's plan for spending during the next five-year cycle.

Many positive comments were made regarding the town hall format, and more are being discussed for the future.

A compilation of the dialog, questions, answers and comments will be sent out via the Sugar Scoop and SugarSprings.net very soon.

It is coming to that part of the year where members are heading to warmer climates and our camping neighbors are getting ready to pull their gear. I wish to thank each of you for your support of Sugar Springs and look forward to the future when we will be welcoming you back. Be safe in your travels.

Jim Issitt, President, SSPOA Board of Directors

FINANCIAL NEWS

FINANCIAL TOTALS as of

July 31, 2019

Cash on Hand: \$1,227,093 - Lake Dredging: \$95,000
 Emergency Reserve: \$128,000 - Building Fund: \$562,909
 Bath House Fund: \$110,000 - Parking Lot Fund: \$10,740

| <u>REVENUE:</u> | July ACTUALS | July BUDGET | YTD ACTUALS | YTD BUDGET |
|----------------------------|--------------------|--------------------|--------------------|--------------------|
| Administration | \$15,838 | \$24,620 | \$1,131,662 | \$1,168,390 |
| Building & Grounds | \$5,087 | \$5,050 | \$158,684 | \$142,610 |
| Pool | \$3,036 | \$3,735 | \$53,227 | \$48,645 |
| Pro Shop /Golf Course | \$54,152 | \$54,700 | \$276,547 | \$274,075 |
| Restaurant | \$101,318 | \$96,000 | \$364,801 | \$399,000 |
| Lake Management | \$1,930 | \$1,500 | \$248,277 | \$237,500 |
| Total Revenue | \$181,362 | \$185,605 | \$2,233,198 | \$2,209,820 |
| <u>EXPENSES:</u> | | | | |
| Administration | \$23,702 | \$39,870 | \$284,300 | \$281,060 |
| Building & Grounds | \$39,793 | \$39,005 | \$228,798 | \$244,005 |
| Pool | \$15,778 | \$16,095 | \$94,075 | \$104,955 |
| Pro Shop | \$24,697 | \$21,505 | \$126,651 | \$123,855 |
| Golf Course | \$45,256 | \$50,635 | \$222,805 | \$221,995 |
| Restaurant | \$97,814 | \$91,840 | \$398,466 | \$379,020 |
| Lake Management | \$51,605 | \$40,115 | \$159,137 | \$202,205 |
| Total Expenses | \$298,627 | \$299,065 | \$1,514,232 | \$1,557,095 |
| Rev. Less Expenses: | \$(117,266) | \$(113,460) | \$718,966 | \$652,725 |

Cash Savings Account: \$19,222 Petty Cash Account: \$3,305
 Memorial Savings: \$15,487

FINANCIAL TOTALS as of

August 31, 2019

Cash on Hand: \$1,144,756 - Lake Dredging: \$95,000
 Emergency Reserve: \$128,000 - Building Fund: \$562,909
 Bath House Fund: \$110,000 - Parking Lot Fund: \$10,740

| <u>REVENUE:</u> | August ACTUALS | August BUDGET | YTD ACTUALS | YTD BUDGET |
|----------------------------|--------------------|--------------------|--------------------|--------------------|
| Administration | \$6,007 | \$14,870 | \$1,137,669 | \$1,183,260 |
| Building & Grounds | \$3,775 | \$3,500 | \$162,459 | \$145,710 |
| Pool | \$3,472 | \$3,335 | \$56,699 | \$51,980 |
| Pro Shop /Golf Course | \$49,430 | \$42,400 | \$325,977 | \$316,475 |
| Restaurant | \$101,790 | \$87,000 | \$466,591 | \$426,000 |
| Lake Management | \$460 | \$1,000 | \$248,737 | \$238,500 |
| Total Revenue | \$164,934 | \$152,105 | \$2,398,132 | \$2,361,925 |
| <u>EXPENSES:</u> | | | | |
| Administration | \$31,595 | \$36,740 | \$315,895 | \$317,800 |
| Building & Grounds | \$39,640 | \$36,905 | \$268,438 | \$280,910 |
| Pool | \$12,627 | \$13,955 | \$106,702 | \$118,910 |
| Pro Shop | \$19,859 | \$20,485 | \$146,510 | \$144,340 |
| Golf Course | \$35,625 | \$48,675 | \$258,429 | \$270,670 |
| Restaurant | \$93,166 | \$85,570 | \$491,632 | \$464,590 |
| Lake Management | \$33,806 | \$28,415 | \$192,942 | \$230,620 |
| Total Expenses | \$266,318 | \$270,745 | \$1,780,548 | \$1,827,840 |
| Rev. Less Expenses: | \$(101,384) | \$(118,640) | \$617,584 | \$534,085 |

Cash Savings Account: \$19,222 Petty Cash Account: \$3,305
 Memorial Savings: \$15,488

Board of Directors Meeting Minutes

**JANUARY 2019
Special BOD
Meeting**

[Click Here](#)

**FEBRUARY
2019 Special
BOD Meeting**

[Click Here](#)

**MARCH 2019
BOD Meeting**

[Click Here](#)

**APR: 2019
Special BOD
Meeting**

[Click Here](#)

**MAY: 2019
Special BOD
Meeting**

[Click Here](#)

**JUNE: 2019
Special BOD
Meeting**

[Click Here](#)

**JUNE: 2019
Annual
Membership
Meeting**

[Click Here](#)

**June: 2019
BOD Meeting**

[Click Here](#)



POA OFFICE HOURS

Monday through Friday 9 am to 4 pm - March 1st - October 31st
Open the 1st and 3rd Saturday of each month from 9:00 a.m. - 12:00 p.m.
beginning April 1st.

Closed Sundays and Holidays

Phone: (989) 426-4111

| | |
|---------------------------------|-----------------------------------------------------------------------|
| ACTIVITY BUILDING | 989.426.0939 |
| RESTAURANT | 989.426.9203 |
| ACTIVITY CENTER/ POOL | 989.426.0938 |
| CAMPGROUND RESERVATIONS: | 989.426.4232 |
| WEBSITE | www.sugarsprings.net |
| FACEBOOK | Sugar Springs POA |
| PRO SHOP | 989.426.4391 |

BOARD MEETINGS

Meetings are held in the Activity Building

September 21, 2019- 10:00 A.M.

December 7, 2019- 10:00 A.M.

Congratulations to Ernie, Judi and the entire Sullivan family



As we entered the 4th year for the **Rosemarie Davis Volunteer Appreciation Award**, the Recreation Committee looked for a volunteer effort that affected all of Sugar Springs.

We chose not person but a group that did something others couldn't or hadn't done before, and we unanimously chose the Ernie and Judi Sullivan Family.

The first change this group brought was the now-familiar SS logo created by Elizabeth Sullivan to unify all aspects of SS – lakes, golf, buildings, amenities, people.

Along the way, they taught us this was called “branding” and SS is now a recognizable brand.

The Sullivan family has advertising copy in their veins with talent ranging from writing to editing to marketing to graphic design.

Of course, no volunteer does it alone; they had lots of support, help and encouragement along the way. But first had to come the Vision, the Expertise, and the Leadership. And this is what The Sullivan Family brought--- and continues to bring-- to the marketing and planning for Sugar Springs.

Congratulations to the entire Sullivan Family for giving so generously of their talent to make Sugar Springs better for all of us.



The following is the report of the Sugar Springs Town Hall that took place on August 24, 2019. Approximately 175 members attended. The first eight pages are the Program Handout given to those in attendance.

Pages (a) through (g) contain the Oral Presentation and Board Member comments. This portion was audio recorded and in a few instances the recording was not clear as far as speakers names were given. Our apologizes for inaccuracies in those instances.

You will find the last portion - pages (h) through (zz) - Members Comments which were submitted on supplied Comment Cards and responses by the SSPOA Board of Directors

SUGAR SPRINGS PROPERTY OWNERS ASSOCIATION

INFORMATIONAL TOWN HALL



**WHERE WE'VE BEEN.
WHERE WE'RE GOING.**

A review of the past five years.
A plan for the next five.

AUGUST 24, 2019

Hosted by your Sugar Springs Board of Directors.

FOR POA MEMBERS ONLY.



WELCOME TO OUR MEMBERS

During this meeting, we'll review activities completed during the past five years and we'll present a plan for the next five. There will be three parts to the meeting:

1. A review of the projects completed during the past three to five years.
2. A presentation of your board's five year plan to maintain and improve our community's facilities and amenities.
3. The financial resources expended during the past five years and the resources estimated to complete the projects identified in the five year plan.

WE VALUE YOUR INPUT

After the presentation there will be time for member comments. Three minutes will be allocated for each member addressing the board. There is also a Suggestions/Idea card available for your use. Please confine your comments to what we can do to forward our goal of maintaining and improving our community.

The board will not respond to your input at this meeting. We have provided a Suggestions/Idea card for you. Your comments will be carefully considered in work sessions and a response will be published in an official communication channel of Sugar Springs (*Sugar Scoop*, SugarSprings.net, email).

*Thank you for attending and thanks in advance
for sharing your thoughts.*



WHERE WE'VE BEEN.

A REVIEW OF THE ACTIONS TAKEN DURING THE PAST FIVE YEARS.

| AMENITIE(S) | ACTIONS/PROJECTS |
|--------------------------|------------------------------------------------------------------------------------------------------------------------------------------------------------------------------------------------------------------------------------------------------------------------------------------------------------------------------------------------------------------------------------------------|
| RESTAURANT | <ul style="list-style-type: none">• Partial replacement of roof• Upgraded Wi-Fi and telephone system• Upgraded remodel (painting, lighting, chairs, etc.)• Coolers:<ul style="list-style-type: none">- Walk-in Cooler and Freezer- Beer Cooler- Beer delivery system to reduce foam and provide higher yield per keg. |
| LAKES AND BEACH CLUBS | <ul style="list-style-type: none">• Repaired boat docks. Repositioned docks from Queensway.• Built three pavilions: Huntington, Berkshire and Islanders.• Maintained soil erosion on both lakes. |
| GOLF COURSE AND PRO SHOP | <ul style="list-style-type: none">• Refurbished pump and irrigation filtering system• Dredged hole number 10 pond• Installed new forward tees• Replaced pro shop deck and entrance ramp• Removed tree stumps• Replaced equipment |



WHERE WE'VE BEEN.

A REVIEW OF THE ACTIONS TAKEN DURING THE PAST FIVE YEARS.

| AMENITIE(S) | ACTIONS/PROJECTS |
|-----------------------|-------------------------------------------------------------------------------------------------------------------------------------------------------------------------------------------------------------------------------------------------------------------------------------------------------------------------------------------------------------------------------------------------------------------------------------------------------------------------------------------------------------------------|
| CAMPGROUND AND CHALET | <ul style="list-style-type: none">• Cleared and graded sledding hill• Upgraded Wi-Fi• Improved 3 of 7 sections in camper storage area |
| BUILDINGS AND GROUNDS | <ul style="list-style-type: none">• Replaced and repaired blacktop in following areas:<ul style="list-style-type: none">- Restaurant section- Golf section- Activity center section- Pickle ball section- POA parking• Resurfaced tennis courts• Built (3) Bocce ball courts• Replaced pool pump• Added Sugar Springs logo signs• Built, repaired walking trails• Purchased maintenance equipment |
| POA OFFICE | <ul style="list-style-type: none">• Replaced all PCs and monitors for Restaurant, POA office and Golf Course• Upgraded Wi-Fi system• Replaced main server• New phone system |



WHERE WE'RE GOING.

A REVIEW OF THE ACTIONS PLANNED FOR THE NEXT FIVE YEARS.

| AMENITIE(S) | ACTIONS/PROJECTS |
|---------------------------------|------------------------------------------------------------------------------------------------------------------------------------------------------------------------------------------------------------------------------------------------------------------------------------------------------------------------------------------------------------------------------------------------------------------------------------------------------------------------------------------------------------------------------------|
| RESTAURANT | 2019/20 <ul style="list-style-type: none"> • Renovate and remodel (part of Phase II) <ul style="list-style-type: none"> - Includes bringing bathrooms/building up to code |
| LAKES AND BEACH CLUBS | 2019 <ul style="list-style-type: none"> • Build Manchester Beach House • Purchase Lake Aeration Equipment 2020 <ul style="list-style-type: none"> • Renovate Kings Way Beach House 2021 <ul style="list-style-type: none"> • Replace Huntington Bath House 2022 <ul style="list-style-type: none"> • Renovate Islander's Bath House 2023 <ul style="list-style-type: none"> • Renovate Berkshire Bath House |
| GOLF COURSE AND PRO SHOP | 2019 <ul style="list-style-type: none"> • Purchase Master Mower (cut banks) • Purchase Greens Roller • Replace Pro Shop Carpet • Purchase Greens Mower 2020 <ul style="list-style-type: none"> • Purchase Rough Mower • Purchase Motorized Sand Trap Rake Machines 2021 <ul style="list-style-type: none"> • Purchase Greens Mower • Purchase Fairway Mower |



WHERE WE'RE GOING.

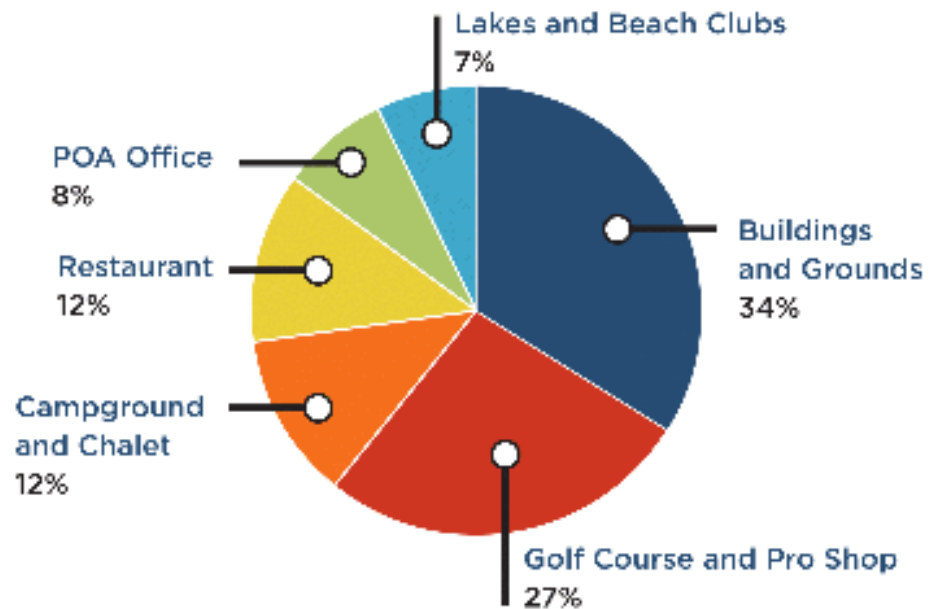
A REVIEW OF THE ACTIONS PLANNED FOR THE NEXT FIVE YEARS.

| AMENITIE(S) | ACTIONS/PROJECTS | |
|-----------------------|------------------|---------------------------------------------------------------------------------------------------------------------------------------------------------------------------------------------------|
| CAMPGROUND AND CHALET | 2020 | <ul style="list-style-type: none">• Renovate section(s) of Camper storage |
| | 2022 | <ul style="list-style-type: none">• Renovate section(s) of Camper storage |
| | 2023 | <ul style="list-style-type: none">• Replace chalet roof |
| BUILDINGS AND GROUNDS | 2019 | <ul style="list-style-type: none">• Replace roof on Buildings and Grounds maintenance building• Purchase an Excavator Trailer• Purchase a used 10-yard Dump Truck |
| | 2020 | <ul style="list-style-type: none">• Purchase vehicle for Buildings and Grounds |
| | 2023 | <ul style="list-style-type: none">• Purchase vehicle for Buildings and Grounds |
| POA OFFICE | 2021 | <ul style="list-style-type: none">• Purchase Copier/Printer |

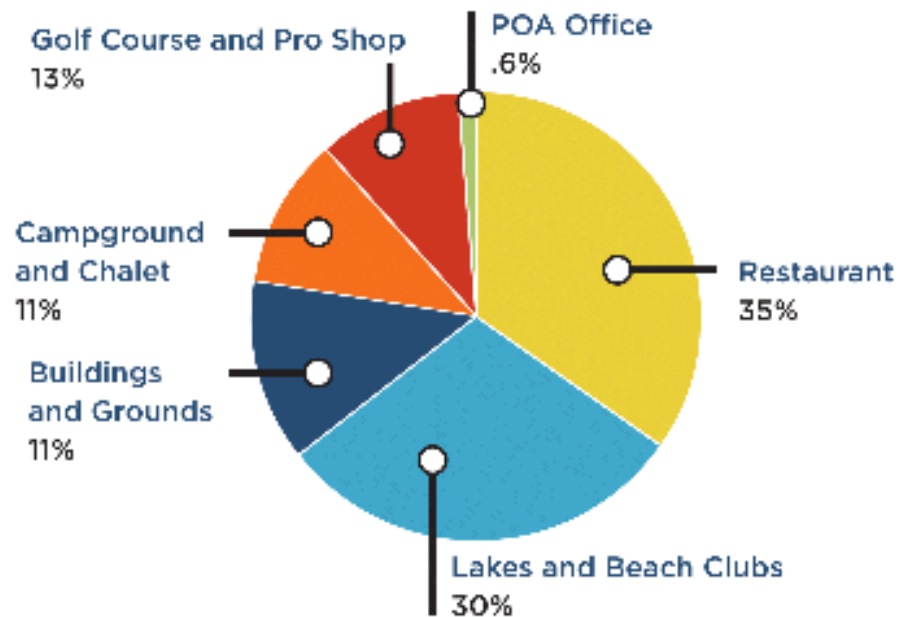


WHERE WE'VE BEEN. WHERE WE'RE GOING.

APPROXIMATE
EXPENSES DURING
PAST FIVE YEARS:
\$740,000

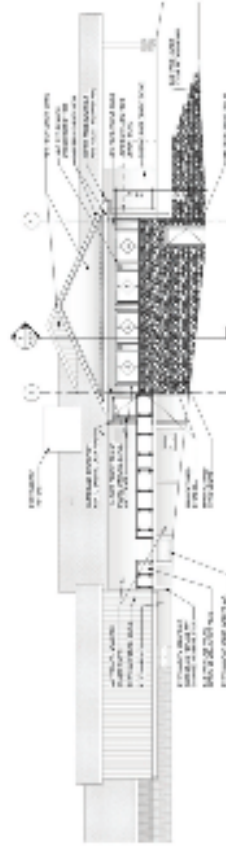


ESTIMATED
EXPENSES DURING
NEXT FIVE YEARS:
\$1,574,000

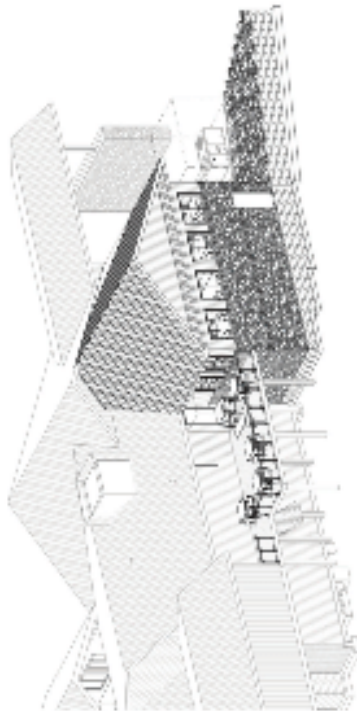




Proposed Overall Plan



Proposed Elevation



Perspective Elevation



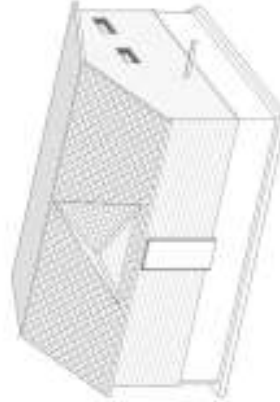
Proposed Toilet Rooms

Hearth Restaurant Bar Renovations





Proposed Overall Plan



Proposed Elevation



New Bathhouse



Toilet Room Finishes



Shower Finishes



ORAL PRESENTATIONS AND BOARD MEMBER COMMENTS

SUGAR SPRINGS POA BOD

INFORMATIONAL TOWN HALL – AUGUST 24, 2019

WHERE WE'VE BEEN. WHERE WE'RE GOING.

BOARD MEMBER INTRODUCTIONS

Opening by SSPOA BOD Director, Dale Dunham, introduced the other BODs, President Jim Issitt, Vice President, Tom Hug; Directors Patti Berg, Catherine Bowman, Tony Haag, and Dennis Hagey. Director John Hawkins was unable to attend, but attended the BOD Work Session covering the material on August 12. Director Dunham then delivered a brief explanation of meeting. Handouts of what would be taking place along with requests for comments from members follows presentation. Comment cards were also available for those who wished to write comments/suggestions for BOD to discuss during work sessions in the future.

PRESENTATION OF DOCUMENT

Presentation was given by Dale Dunham using pages from printed program and various boards on display. Boards had identical text as seen in handout. He spoke to each page of "Where We've Been" and "Where We're Going". (*Page 1*) BOD President, Jim Issitt followed with explanation of pie charts (*Page 6*) indicating expenses during past five years and estimated expenses during next five years.

PRESIDENTS COMMENTS

He said: "You have heard some important facts today relating to the BODs actions over the last five years regarding capital expenditures for the SSPOA. You have also received information for the expenditures expected for the next five years. Expenditures for 2015 to 2019 totaled approximately \$740,000. While improvements were taking place, and money was being spent, the Board was replenishing reserve funds to meet future needs. There are often many questions on

(a)

the financials at BOD meetings about pockets of money here, pockets of money there... those are the reserve monies that we are replenishing. You have seen that our future plans are quite ambitious and that we estimate the cost to be approximately \$1,574,000. Due to the Board and General Managers special attention, a significant amount of the dollars needed are already in reserve. As an example, in 2019-2020 our major expenses ... the restaurant, the bath house at Manchester, and the lake aeration equipment, with total costs of approximately \$723,000 is on hand from today's reserve funds. We must be cautious, however, that when final bids are received - and we are still waiting for the final bids from the developer and the builders who volunteered their services, to find out what the final bids are. If they are higher than expected, then obviously we as a Board will reassess our position to move forward in a fiscally responsible manner, making adjustments as necessary. You will find the current schematics for the two primary projects, the restaurant and the bath house are in your handouts and on the boards at the front of the room. You need to understand that anything you do to a building that's 45 years old for updating, refurbishing, etc., has one important thing that must be done. They all must comply with the Americans With Disabilities Act. We can't touch a screw in that restaurant until we replace the bathrooms. The bathrooms are the first project we have on hand as you will see, along with the bar, deck, four seasons area, etc. We must also remain prepared for any unforeseen catastrophic event - who knows that it might be or when it might happen - that could deplete the reserve funds significantly. We have to keep all this in mind as we move forward. Your Board foresaw this problem and considered various solutions over a period of time. We discuss this on a monthly basis.

We believe the plan you reviewed today is meant to maintain the Associations fiscal liability moving forward. At current levels, we believe the contributions will replenish our reserve funds through the next five year planning cycle. We must also address the future needs and circumstances, that will reach Sugar Springers beyond this five year plan. Obviously the five years offers a large amount of projects being done in the community but it doesn't cover everything. Projects are going to be ongoing. Moving forward, we as the caretakers of the property right now, need to take a look at the property five years from now, ten years, fifteen years down the road. As all costs continue to rise, the funds will continue to

(b)

diminish necessitating alternate ways to help operations and projects in Sugar Springs. Our last assessment increase was in 2011 and at the end of this five year development plan, 2022-2023, will have been 12 years since we've had an increase over the current level here in Sugar Springs. The current plans show no need for the next two years for additional funds, but year three shows that some actions will be necessary. With that in mind, your Board is recommending to take the following actions for your consideration; please consider it carefully. 2019 is the voting year for the next three year cycle of assessments. This will take place this fall. For the year 2020-2021, we recommend no increase in the annual assessment. The assessment will remain at \$440.00. For the year 2021-2022 the Board is recommending no increase in annual assessments. The assessment will remain at \$440.00. For the year 2022-2023 a \$25.00 assessment increase to begin the next phase of the development and funding for Sugar Springs is recommended. That will take assessments from \$440.00 per year which they have been since 2011 to \$465.00 per year. Again, please consider this proposal carefully. Thank you for your support over the past five years and for your continued support as we go forward for the next five years."

Additional Comment from Dale Dunham: "One of the things I would like to point out is that the Board is hoping to keep around \$600,000 to \$700,000 in cash. I remember when I first became a Board member, the thing that was talked about was that they had to lease golf carts. The situation I don't want to get into is that we have no money to build. I think what we have done in the past five years and what we are going to do in the next five years is that we want you to enjoy the facilities, upgrade them and make sure that we have the money to do those things. We do not want to get into a situation where we don't have money left. So that's our goal to keep those funds to use if we need to."

MEMBER COMMENTS

(Diane Smith): Our former residence – a condo complex in Ann Arbor, BOD was "afraid" to ask for increases in assessments therefore they were not raised. The

(c)

complex wound up in trouble and residents eventually paid \$340.00 per month. Suggested raising dues \$5.00 per year. That will build reserves. If a situation arises, reserves will be available.

(Oren Lusher): Compliments to BOD on hard work and appreciates this presentation. Agrees that an increase in dues is necessary need funding to make it all happen.

(Rob Homer?): Likes Ad promotions for SS. Is there an increase in property sales? Would like promotions to continue. Increase in dues would be a good thing as we need reserves. Wants members and their visitors to be reminded of SS Rules and Regulations.

(Hank Hale): Addressing the renovation of restaurant – what is the schedule for construction and will it affect the opening and closing of the Hearth? Will it be done during the winter months?

BOD Jim Issitt answers! “ At this point, we are still waiting for the final bids to arrive. We have anticipated what the costs will be. Our intention and the intention of the developer is that the Bath House on Manchester will be finished by November. As for the restaurant, we will wait until the deep part of the winter and we will try to schedule it (not knowing what their limitations will be). Not knowing what the problems might be. One of the problems may be the sewer that runs beneath the building. Obviously if they are working on that the building will have to be closed. Other than that, the majority of the construction is on the back wall of the bar and the restroom areas. We believe and they agree, that we would start with the bathrooms, one at a time and that we could keep the restaurant open during that time. Our intention is to keep the restaurant open as much as we can during this time with as little downtime as possible. Not only is that an issue, but our issue is where is our help going to be? We must look after our staff as well. So the intent is to do it in piecemeal so that we can keep it open as much as possible.”

(d)

(Cindy Michalin?): We are not here full time and we are thankful that there are neighbors who look after our property while we are gone and we appreciate that very much. The membership here is astounding. What I wanted everyone to think about is about the funding that they are asking the increase for. That if you own property here and I assume that you do, you have put a lot more into your personal property than what they have here in Sugar Springs. They are asking for an increase for what everybody uses. The \$25 they mentioned coming up in a couple of years is really small. All of us have put way more into our individual properties and even if we go down and plant flowers in the summer to make it look pretty, so think about how much you have spent yourself and how that little bit will make a difference for all the rest of the people who want to use the restaurant, the golf course, the beaches. Whatever you have has to be maintained and we want it to be maintained for everyone. I just wanted to say that and that the Town Hall was a very good idea. Thank you.

(Steve Johnson): I agree with everything that is being said that \$5 or \$10 a year is “chump change”. We should be doing \$10 a month! My condo association in California was \$180 a month. There isn’t a person in this room that can’t afford \$10 a month. It’s \$120 a year. Let’s get that reserve built up. One last thing ... I used to be one myself ... a Bob Neeb “basher”. In my opinion, we’ve got the best General Manager we’ve ever had since I have lived here in 1999. So heat him up if you will, but we have a good General Manager.

(Bob Osowski, Holding up a poster with photos) This was the bay at Kings Way five years ago. We have to dredge. There was 4 to 6 feet of water all over that bay. If you go out there today, I can’t move my pontoon. This might be 6 to 8 inches and extends all the way to the swimming beach. In five years, the first six houses aren’t going to have lake frontage. We need to address that.

(Lindsey Aguilera): This is concerning membership dues. This is a disappointment. There are currently 130 properties for sale here. Those homeowners are taking 15 to 20 grand off their for sale price to try to entice buyers and still not having any. You have 136 Back Tax lots. I think there needs to be some sort of incentive for people to purchase these lots because you could also add

(e)

on to your house for a fee. There is no incentive. When I drive around and see these unmaintained lots and public auction signs ...it's a beautiful community but it doesn't look good. Right now I want to put money into my house, but the way our home values are right now, you don't want to do that. I take issue with that. I want to invest in the community, but when the time comes I'm going to take a loss. So I really think that something needs to be done with all the empty property we have.

(Kim Krenz): I think,sometimes about how the politics of Sugar Springs and our POA Board works. We hire these folks to do our bidding and they do an excellent job. Thank you very much. I have only one suggestion that I haven't seen on the expenditures a very small expenditure. I would really like to see security be readdressed. Not that we need it ... but just a presence brings some additional warm and fuzzy feelings to those of us that can't run very well anymore.

(Julie Picanni?): I am a new resident since the end of May. I was looking around at property and decided to report back to my two sons who just purchased lots here in Sugar Springs. They are probably among the youngest residents who are planning to build. I think that's awesome that we've got folks of all ages in this area who live and play together. I also happen to be a realtor and I just wanted to say I don't think it's (***)audience interference) for some of these abandoned lots to (***)audience interference). I can tell you that I have been in the business for a really long time and we are seeing a downturn in the business. Things have been going up for nearly ten years and they are starting to level off and we are starting to see changes in our property values. I don't really think it has a lot to do with the way Sugar Springs looks nor the signs that are up ... it's just what is happening not just here in Gladwin but also down in Oakland County. The same thing is happening there.

(No name given): In my previous life I was involved in the criminal justice system and I just want to let the Board know that if you are talking about "bang for your buck", the cheapest thing you can do is to improve lighting around the area. That seems to be a big issue around Sugar Springs. That's quite all right. The second

(f)

thing you get the “biggest bang for the buck” is the uniform of officers present, whether it be police or security. Just that much gives you a lot for your money.

END OF COMMENTS - CLOSING

In closing, Director Dunham thanked all for the above comments asked the remaining audience to please write comments down on cards and deliver to the comment box available at entrance or to mail or drop off cards at the POA Office.

He said, “As comments were made it was apparent that members want things to get better. As far as responses go, we will respond to those suggestions given on the official sites for Sugar Springs – the Sugar Scoop and website – SugarSprings.net., an email blast and the official Sugar Springs Facebook page which is Sugar Springs Property Owners Association.”

(g)



You know who to call when disaster strikes.

Our clients know that when an emergency strikes, a professional dispatcher from DeShano Restoration will be ready to take their call.



-  Water Damage
-  Fire Damage
-  Mold Remediation
-  Ultrasonic Contents Cleaning
-  Storm Damage Cleanup
-  **Now offering Trauma Cleanup**
We'll get it done right!

Give us a call today!

We're available 24 hours a day, 7 days a week.

(800) 234-0800

325 Commerce Court, Gladwin, MI 48624 • Family owned & operated for over 50 years!

We'll get your new home done right.

-  Custom New Home Construction
-  Full Design Center & Showroom
-  Shell Home Construction
-  Insured and Licensed
-  **Call today for a free estimate!**

Stop in & visit our showroom!



www.deshano.com





September-October 2019 Fitness News




Member \$5.00 Guest \$6.00 Public \$7.00

Monday

Fitness Room: 8am-9pm
Lap Swim: 8am-9am
Water Aerobics: 9:15am-10:15am &
10:15am-11:15am
Men's Water Volleyball 11:30am-1pm
Open Swim: 1pm-3pm & 5pm-9pm
(only until Sep 27th)

Tuesday

 **Fitness Room:** 8am-8pm
Lap Swim: 8am-9am & 11:30am-1pm
Water Aerobics: 9:15am-10:15am &
10:15am-11:15am & 4pm-5pm
Open Swim: 1pm-4pm & 6pm-8pm
Swim lessons: 5pm-6pm

Wednesday

Fitness Room: 8am-8pm
Lap Swim: 8am-9am
Water Aerobics: 9:15am-10:15am &
10:15am-11:15am
Men's Water Volleyball 11:30am-1pm
Open Swim: 1pm-3pm & 5pm-8pm
(only until Sep 27th)

Thursday

Fitness Room: 8am-8pm
Lap Swim: 8am-9am & 11:30am-1pm
Water Aerobics: 9:15am-10:15am &
10:15am-11:15am & 4pm-5pm
Open Swim: 1pm-4pm & 6pm-8pm
Swim lessons: 5pm-6pm

Friday

Fitness Room: 8am-8pm
Lap Swim: 8am-9am
Water Aerobics: 9:15am-10:15am &
10:15am-11:15am
Men's Water Volleyball 11:30am-1pm
Open Swim: 1pm-3pm & 5pm-8pm
(Only until Sep 27th)

Saturday

Fitness Room & Open Swim: 8am-8pm

Sunday

Fitness Room & Open Swim: 1pm-8pm



Upcoming September-October Events

Sugar Springs BOD Directors meeting is Sept. 21st at 10am in the Activity Building

Check out our upcoming end of season Golf Outings! And awesome end of summer sales at the Pro Shop

Trunk or Treat! Come out with the kids to the Camping Committee Annual Trunk or Treat event October 5th from 1pm-3pm. At the Activity Center

The Monster Bash Dance is to follow in the Activity Center from 6pm—9pm. Come join the fun, get some sweet treats, play some games and win some prizes!

Sugar Springs has a variety of other fun and social activities, just check out our calendar at Sugarsprings.net

Plan your pool party today



Activity Center 1930 Sugar River Rd Gladwin, MI 48624 - 989.426.0938



Restaurant Hours

Sunday - 9:00 a.m. - 9:00 p.m.

Monday - Thursday - 11:00 a.m. - 9:00 p.m.

Friday - Saturday - 11:00 a.m. - 11:00 p.m.



GLADWIN – The 8th Annual Souper Challenge was held on Saturday, March, 2 at the Knights of Columbus Hall in Gladwin. The yearly fundraiser for the Gladwin County Community Foundation pits local restaurants and dining services against one another to determine who has the best soup in Gladwin County.

This year, the Hearth Restaurant was awarded 1st Place in both the Judges Choice and Peoples choice categories for their entry of our Poblano Corn Chowder.

Congratulations to our restaurant staff for a great accomplishment!!

Hearth MENU

Starters

FLAMING SAGANAKI

Kasseri cheese diffused in brandy, served with table side lemon and warm pita bread 8
Extra pita bread - 1

BADA BING SHRIMP

Lightly dusted shrimp, flash fried to a crispy golden brown, tossed in our house-made sweet spicy Asian sauce 10

BEER BATTERED ONION RINGS

Thick-cut slices of sweet onions, battered and deep-fried 8

BEER BATTERED MUSHROOMS

Fresh mushrooms hand dipped in our house-made beer batter and deep fried to a golden brown 8

MOZZARELLA CHEESE STICKS

Italian seasoned, breaded, deep-fried and served with marinara sauce or ranch dressing 7

WINGS

Available sauces: Plain, Hot, Mild, Bada Bing, BBQ, Garlic Herb Parmesan or Dirty

Boneless: Small 7 Large 10.50

Traditional: Small 9 Large 12.50

CHICKEN TENDERS

Breaded chicken tenders deep fried and served with choice of Ranch, BBQ, Honey, Honey Mustard or Hot Sauce. 8

Mixed GREENS

CLASSIC CAESAR SALAD

Chopped romaine lettuce, creamy Caesar dressing, parmesan cheese, house-made garlic croutons and lemon wheel. Can be gluten friendly when prepared without croutons 9
Add Salmon 7 or Shrimp 5
Grilled Chicken 3 or Anchovies 2

CHEF SALAD

Chilled mixed greens, ham, turkey, bacon, tomatoes, red onions, cheddar jack cheese and sliced egg. Served with your choice of dressing 9

GRILLED CHERRY

CHICKEN SALAD

Chilled mixed greens topped with dried cherries, grilled chicken, cucumber, tomatoes, red onions, and almonds. Served with raspberry vinaigrette 12

STEAK HOUSE SALAD

Char-grilled to your preference! Sirloin steak in a balsamic marinade, chopped walnuts, bacon, red onion, and bleu cheese crumbles served on chilled mix greens with balsamic vinaigrette dressing 11

SOUTHWEST CHICKEN SALAD

Mixed greens, house-made black bean corn salsa, red onions, roasted red peppers, cheddar jack cheese and julienned blackened chicken. Topped with corn and roasted red pepper tortilla strips and served with cilantro lime vinaigrette dressing 11

CHICKEN AND BACON SALAD

Chilled mixed greens topped with bacon, chicken and cheddar jack cheese. Served with ranch dressing with your choice of chargrilled chicken or crispy chicken tenders. 11.

South OF THE BORDER

WET BURRITO

Made with your choice of seasoned ground beef or chicken, with refried beans and smothered with enchilada sauce and melted cheddar jack cheese. Served with lettuce, tomato, onions, black olives and sour cream and salsa 10.50

CHICKEN QUESADILLA

Our large flour tortilla stuffed with char-grilled chicken, cheddar jack cheese, diced onions, tomatoes red and green bell peppers. Grilled and served with salsa and sour cream on the side 10

CHICKEN & SPINACH QUESADILLA

Our large flour tortilla stuff with a blend of white cheeses, char-grilled chicken, red onions, and fresh spinach. Grilled and served with sour cream and salsa on the side 10

NACHO SUPREME

Our house-made tortilla chips topped with melted cheddar jack cheese, seasoned ground beef, lettuce, tomatoes, onions, black olives and jalapeños. Served with sour cream and salsa on the side 9

Fresh SOUPS

SEASONAL SOUP OF THE DAY

Cup 3.50 Bowl 4.25

ROASTED POBLANO CORN & SHRIMP CHOWDER

Available Weekends Only. Served with homemade roasted pepper chips
Cup 5.50 Bowl 6.50

Build YOUR OWN PIZZA

CHOICE OF CRUST:

Traditional or Butter Garlic
Gluten free crust is available for an additional 4.00.

Personal 10" Cheese Pizza 6.75

Toppings for 10" .50 each

Large 14" Cheese Pizza 11.25

Toppings Choices for 14" 1.00 each

Add Chicken: 10" 2.00 or 14" 4.00

Add: Crumbled Bleu Cheese or Feta 10" .75 or 14" 1.50

Toppings: Ground beef, Italian sausage, bacon, pepperoni, ham, mushrooms, onions, black or green olives, pineapple, red peppers, green peppers, banana peppers, jalapeños, tomatoes, spinach, and anchovies.

Specialty Pizza AND MORE!

SUPREME

Pepperoni, ham, mushrooms, onions, green peppers and Italian sausage
10" 9 or 14" 16.50

MEAT LOVERS

Pepperoni, ham, Italian sausage, bacon and ground beef
10" 9 or 14" 15.50

MEDITERRANEAN

Pizza sauce, mozzarella blend and feta cheeses with fresh spinach, red onions, black olives, tomatoes, mushrooms, red pepper and artichoke hearts
10" 9.50 or 14" 17

CALZONE

Your choice of two items 9.50
Additional Items .50 each

CHEESY GARLIC BREAD

Served with pizza sauce for dipping 6.75
Add Jalapeño Peppers .50

*Consuming raw or undercooked meats, poultry, seafood, shellfish or eggs may increase your risk of foodborne illness, especially if you have certain medical conditions.

Entrées AND LARGE PLATES

All Entrees are served with rolls, house salad or a cup of seasonal soup, and a choice of one of the following side items (except for Pasta dishes). Baked potato, sweet potato, French fries, mashed potatoes, wild rice blend, Chef's blend vegetables, or cinnamon sugar sweet potato steak cut fries. **Additional Sides 2.50. Add Poblano Corn & Shrimp Chowder (available only on weekends) 1.99**

BALSAMIC STEAK HOUSE SIRLOIN*

Hand cut sirloin steak in our balsamic marinade and cooked to your preference and topped with garlic/herb butter 16. Add Sautéed Onions or Mushrooms for 2

RIBEYE*

Hand-cut to order, seasoned and char-grilled to your preference. You may upgrade your steak to a larger size for 2.00 per ounce 10 oz. 19 or 12 oz. 22. Add Sautéed Onions or Mushrooms for 2

CHOPPED SIRLOIN

Our hand pattied ground beef steak seasoned and char-grilled to your preference, smothered with our home-style brown gravy and grilled onions 11. Add Sautéed Onions or Mushrooms for 2

LIVER & ONIONS

Beef liver grilled to your preference and topped with grilled onions and bacon

Full Order 13 or Half Order 10.50

RASPBERRY ALMOND CHICKEN

Seasoned flour dusted chicken medallions pan seared and topped with our house-made raspberry sauce and toasted almonds 14

CHARGRILLED CHICKEN DINNER

One breast 10 / Two breasts 13

JUMBO SHRIMP

Hand breaded panko style jumbo shrimp deep fried and served traditional or tossed in our house made Bada Bing sauce 20

SALMON

Salmon filet prepared your way, traditional, blackened and topped with our house made Cajun sauce, or topped with a picatta sauce 21

FISH & CHIPS

Hand cut Alaskan cod filets prepared your way. Hand dipped in our house made seasoned beef batter and deep fried, pan fried or baked with lemon pepper seasoning 13

CHICKEN MARSALA

Chicken medallions dusted with our seasonal flour and pan fried with mushrooms and garlic and cooked in marsala sauce and served over fettuccine pasta 14

CHICKEN ALFREDO

Char-grilled julienned chicken breast with sautéed red peppers, sweet peas and red onions in a creamy garlic Alfredo sauce and served over fettuccine pasta 15. Made with Shrimp 20

SHRIMP SCAMPI

Jumbo shrimp sautéed with zucchini in butter, garlic and white wine. Served over angel hair pasta 16

PRIME RIB*

Available Friday & Saturday Only. Slow roasted with our own blend of house seasoning and served with Au Jus. Pro Cut 29. King Cut 24. Queen Cut 21

AHI TUNA

Blackened tuna steak pan seared medium rare. Served with wasabi 19

PERCH DINNER

Perch filets lightly dusted in seasoned flour and pan fried golden brown 22

CHICKEN FRANCESCA

Julienned chicken breast sautéed with artichokes, sweet yellow peppers, parsley, lemon, garlic and butter. Tossed with angel hair pasta and parmesan cheese 15. Made with shrimp 20

MUSHROOM FLORENTINE

Mushrooms sautéed with red onion and spinach in a garlic parmesan cheese sauce. Served on linguine pasta and topped with parmesan cheese 11

Made with chicken 14

Made with shrimp 16

CHICKEN PARMESAN

Chicken breast lightly breaded topped with red sauce and parmesan cheese. Served over linguine 13

Burgers AND SANDWICHES

All sandwiches are served with house-made potato chips. Add French Fries 2.75. Add Side House Salad 2.50. Add Side Order of Onion Rings 3.25. Add Side Caesar Salad 4.25

SUGAR SPRING BURGER*

Build your own favorite. We start with a 1/2 lb. hand pattied ground beef, seasoned and char-grilled. Served on a brioche bun with lettuce, tomato, onion and house-made chips 9

Add: American, Swiss, Provolone, Cheddar Jack, Grilled Mushrooms & Onions, Green & Black Olives or Jalapeños .60 each

Premium Add Ons: Bleu Cheese Crumbles, Crumbled Feta or Bacon 1.50 each

PATTY MELT*

Our traditional hand pattied burger seasoned and char-grilled, served on a grilled rye bread with Swiss cheese, grilled onions and Thousand Island dressing with house-made chips 9

BEEF OR CHICKEN SLIDERS*

Three beef or chicken sliders topped with grilled onions with your choice of American or Swiss cheese 6.75

REUBEN SLIDERS

Corned beef topped with sauerkraut and Swiss cheese 9

GYRO

Traditional lamb gyro meat served in a warm pita bread with shredded romaine, tomato, red onion, and our house-made tzatziki sauce 8.75

Additional Tzatziki Sauce .50

CLUB WRAP

Shaved ham, turkey, bacon, mayonnaise, romaine, tomato, Swiss and American cheese wrapped in a 12" tortilla and grilled 9

MEDITERRANEAN TURKEY

Warm shaved turkey, fresh spinach, red onions, house made artichoke aioli and crumbled feta cheese, drizzled with balsamic glaze. Served on a toasted ciabatta bun 9

FRENCH DIP

Shaved prime rib and provolone cheese on a grilled hoagie bun served with au jus for dipping 11. Add Onions, Green Peppers and Mushrooms for 1.00

CLASSIC REUBEN

A classic favorite made with shaved corned beef brisket, sauerkraut and Swiss cheese on a grilled rye bread and served with our house-made Thousand Island dressing 9

CHICKEN HANI

Chargrilled chicken breast julienned with melted provolone cheese served on a warm pita bread with mayo, romaine, tomatoes and red onions 9

CHICKEN CAESAR WRAP

Char-grilled chicken breast served in a flour tortilla with romaine, Caesar dressing, parmesan cheese and grilled to perfection 9

CHERRY ALMOND CHICKEN WRAP

Cherry chicken salad with romaine, tomatoes and toasted almonds wrapped in a roasted red pepper wrap 9

CAJUN CHICKEN

Chicken breast coated in our house made Cajun seasoning. Chargrilled with red onions, red and green peppers and melted provolone cheese. Topped with our house made Cajun sauce, served on a grilled ciabatta bun 9

A&E Committee

NOTES FROM THE ARCHITECTURAL AND ENVIRONMENTAL CONTROL COMMITTEE

Lately a few members have taken on projects at their homes that require approval from this committee, without getting a permit prior to construction. This is in violation of the Covenants and Bylaws and could subject the member to fines or other actions. If there is any question as to whether a permit is required for any work please contact the POA office or the A & E Committee to be sure. The Committee meets every Tuesday at 9:00 am in the basement of the Activities Building, or the members may be reached through the POA office. The "[Pure Sugar Springs](#)" Website is not an official site of Sugar Springs and the advice from there is merely the opinion of the responder and should not be relied on for legal advice.

Below is the general policy of the AECC regarding violations:

A&E VIOLATIONS POLICY

Violation first noted – letter of notice of violation with deadline for correction
(Usually 30 days from date of letter).

Second notice of violation – includes notice of fine and new deadline for corrective action (usually 30 days from second notice).

Third notice of violation – includes secondary fine amount, notice of suspension of use of commons areas, and notice of referral to POA attorney for action.

Violations will include, but are not limited to:

- Failure to meet setback requirements
- More than one outbuilding on a lot with a house
- Outbuilding not same color as house
- Trailers parked improperly on lot
- Camping unit on lot with house
- Camping on lot with no camping permit displayed
- Wellhouse on camping lot not consistent with regulations
- Prohibited items left on camping lot at end of camping season
- Tarps on lots
- Firewood not stacked according to regulations
- Signs improperly displayed
- Docks exceeding 20 feet over the water or four feet in width

Initial fines for violations will typically be \$25.00. Secondary fines will typically be \$50.00.

FAILURE TO OBTAIN THE PROPER PERMIT OR APPROVAL PRIOR TO STARTING ANY WORK OR PHYSICAL ACTIVITY ON ANY PROJECT REQUIRING A PERMIT OR APPROVAL DOES NOT RELIEVE THE PROPERTY OWNER FROM THE OBLIGATION OF OBTAINING THE REQUIRED PERMIT.

PERMITS OBTAINED AFTER STARTING WORK OR PHYSICAL ACTIVITY WILL INCUR A PERMIT FEE OF UP TO TWO HUNDRED FIFTY DOLLARS (\$250.00) FOR THE FIRST OCCURENCE, PLUS MEETING THE REQUIREMENTS OF THE COVENANTS AND BYLAWS OF SUGAR SPRINGS. THE SECOND AND SUBSEQUENT OCCURRENCE(S) OF A FAILURE TO OBTAIN PRIOR APPROVAL FOR THE SAME OR ANY OTHER PROJECT WILL INCUR A PERMIT FEE OF UP TO FIVE HUNDRED DOLLARS (\$500.00).

SUGAR SPRINGS A & E COMMITTEE

I think most of us agree that Sugar Springs is a great place to live or camp as well as being a sound financial investment. One of the reasons we are “Mid-Michigan’s best kept secret” is the rules that govern our environment.

Everyone who owns property in Sugar Springs, whether it be a home lot, camping lot or vacant lot, is subject to and bound by the Covenants, By-laws and all additional Regulations and Policies that have been enacted by the Boards of Directors over the last 48 years. These rules are easy to live with and make us who we are today.

The Architectural & Environmental Control Committee is made up of volunteers, who are your neighbors, and is tasked with administering and enforcing the rules pertaining to our environment. A key part of our duties is the approval process for permits for construction. The SS rules require that any owner wanting to build anything on, or modify a lot, must get approval from the A & E Committee. This includes lot modifications (move dirt, cut down trees, install gravel pad, etc.), construction of any structure (home, garage, shed, addition, outbuilding, deck, gazebo, well house, etc.). The rules also require a permit for any color selections or changes to the above structures.

Each member received a copy of the SS Regulations and Policies with their invoice for fees this year. We ask that you read these rules so you won’t be surprised if you get a call or letter. **If you are planning any type of construction or lot modification please FIRST obtain a copy of the SS Construction Pamphlet and Permit Application and read the requirements therein, hopefully avoiding any problems.**

SS Camping Committee

SUMMER 2019 EVENTS!

JULY 6TH

SS Swag!!

Purchase SS apparel & more at the annual craft fair! Check out new designs or purchase an old favorite.

JULY 27TH

Boat Parade!

Rain Date: Aug 10th
more details to come

The Camping Committee Potluck Picnic has been **CANCELLED**.
was scheduled for Aug 10th

OCT 5TH

Trunk or Treat

more info at a later date

Halloween Dinner/Dance

Costume Party **NEW EVENT!!**

Tickets will be sold later this season.

more info at a later date

Bottle Drive

Now Collecting!!!

Donations will be used for committee events & giving back to the SS community.

To Donate Contact:

Jennifer Kroll | Lindsay Aguilera | Catherine Bowman

Please make sure your bottles or can donation are clean and free from liquids, dirt or debris. Be kind as others will be handling them to return for the deposit charge.



SS Camping Committee

MONSTER BASH 2019!



DATE: SAT, OCT 5TH

LOCATION: ACTIVITY CENTER (Both Events)

[1-3PM] TRUNK OR TREAT

for children 12 & under accompanied by an adult

***Sweets n Treats* Hot Cocoa* Punch*
Crafts Face Painting* Games***



© 2018 by Jennifer Kroll

CONTESTS:

COSTUME & BEST DECORATED CAR

>SS Apparel Available for Purchase!<

Questions? Contact:

Jennifer Kroll: 989.578.2824 | Lindsey Aguilera 989.600.1699

SS members & guests or residents of Butman Twp are welcome

[6-10PM] DANCE

FUNDRAISER!!

\$20 Per Person

tickets available for purchase @
The Hearth through Sun, Sep 29th.

INCLUDES:

>DJ

>CASH BAR

>COSTUME CONTEST

>50/50 & BASKET RAFFLE

>COMPLIMENTARY TACO BAR

Questions? Contact:

Martha Grubbs: 810.335.1570

****Adults Only****

Presented By: SS Camping Committee

SEASONS END
PANTRY CLEANOUT!! *1st Annual*

to benefit the New Dawn Shelter

HEADING OUT? WHILE CLEANING OUT, DONATE!

NOW-SAT, OCT 26TH!

****NON-PARISHABLE ITEMS ONLY****

Convenient Drop Off:
Activity Center & The Hearth

Questions? Contact: Martha Grubbs 810.335.1570

Jane Giffin 734.368.1562

All Donations Will Be Given to:

Gladwin's New Dawn Shelter!

989.709.6089 | 137 Commerce Ct. Gladwin, MI

| Mixed 6 Teams | TEE FLIGHT | Winnings | Mixed Six |
|-----------------------|------------|----------------------|-----------|
| Closest to Pin | #12 | Johnstone - Kazanski | \$10PP |
| Closest to Pin | #15 | Bunse - Bisogni | \$10PP |
| Closest to Pin | #3 | Ehrke - Ferrari | \$10PP |
| Closest to Pin | #5 | Bossick - Schalk | \$10PP |
| Shumway - Hehn | GOLD A | \$35PP | 62.842 |
| Roberge - Fuller | GOLD A | \$25PP | 66.763 |
| Ehrke - Ferrari | GOLD A | \$20PP | 67.515 |
| Creed - Schalk | GOLD A | \$17PP | 67.981 |
| Fitch - Dornbecki | GOLD A | \$17PP | 67.981 |
| McCain - Bremer | GOLD A | | 69.575 |
| Kitchen - Uballo | GOLD A | | 70.575 |
| Groff - Unsworth | GOLD A | | 71.278 |
| Kazanski-Kazanski | GOLD A | | 71.466 |
| Snyder - Gillett | GOLD A | | 71.545 |
| Dickenson - Berg | GOLD B | \$35PP | 65.09 |
| Hug - Francetic | GOLD B | \$25PP | 66.387 |
| Bodenbach - McMillion | GOLD B | \$20PP | 66.684 |
| Payne - Ehle | GOLD B | \$18PP | 69.09 |
| Felt - Felt | GOLD B | \$15PP | 70.684 |
| Vitale - Hall | GOLD B | | 72.793 |
| Meyer - Christenson | GOLD B | | 74.09 |
| Baker - Visnaw | GOLD B | | 78.684 |
| Salmon - Wilson | GOLD C | \$35PP | 62.011 |
| Fisher - Waisanen | GOLD C | \$25PP | 62.605 |
| Manning - Strieter | GOLD C | \$20PP | 65.308 |
| Ariganello - Mitchick | GOLD C | \$18PP | 66.199 |
| Basher - Brooks | GOLD C | \$15PP | 69.417 |
| Klott - Klott, Jr | GOLD C | | 70.417 |
| Kelley - Olschanski | GOLD C | | 71.011 |
| Giffin - Crisp | GOLD C | | 72.417 |
| Gossett - Knight | GOLD C | | 72.902 |
| Klott - Klott | GOLD D | \$35PP | 68.526 |

Men's Member-Member Results

A -Flight Payouts

| | | |
|-----------------------------------|-----|-----------|
| 1 st - Ehrke/Gossett | 192 | \$60PP |
| 2 nd - Dunham/Maxim | 193 | \$45PP |
| 3 rd - Bremer/ McCain | 195 | \$30PP |
| T4 th - Hug/ Hug | 197 | \$17.50PP |
| T4 th - Giffin/ Snyder | 197 | \$17.50PP |

B Flight

| | | |
|----------------------------------------|-----|-----------|
| 1 st - Baker/ Strieter | 189 | \$60PP |
| T2 nd - Mitchick/ Unsworth | 191 | \$37.50PP |
| T2 nd -Hal/ Vitale | 191 | \$37.50PP |
| 3 rd - Bodenbach/ McMillion | 195 | \$20PP |
| T4 th - Brooks/Visnaw | 201 | \$4PP |
| T4 th - Berg/Dickenson | 201 | \$4PP |

C Flight

| | | |
|--------------------------------------------|-----|-----------|
| 1 st - Francetic/ Gentry | 188 | \$60PP |
| T 2 nd - Fitch/ Gagnon | 188 | \$37.50PP |
| T 2 nd - Freeman/ Pellegrin Jr. | 188 | \$37.50PP |
| 3 rd - Hale/ Longendyke | 191 | \$20PP |
| 4 th - Bunse- Bisogni | 193 | \$15PP |

D-Flight

| | | |
|------------------------------------|-----|-----------|
| 1 st - Taunt/ Bailey | 184 | \$60PP |
| T 2 nd - Dix/Haag | 199 | \$37.50PP |
| T 2 nd - Greene/ Maurer | 199 | \$37.50PP |
| 3 rd - Rennaker/Clarke | 201 | \$20PP |
| 4 th - Holcomb/Studdard | 204 | \$15PP |

A message from your Lakes Committee.

It is that time of year when our children and grandchildren go back to school, the weather gets cooler, the colors start changing, vacations are over, weekend visits get less frequent, and the leaves start to fall from the trees.

Although these leaves are lovely to look at, they create quite a problem for our lakes. If they are not cleaned up and disposed of properly the wind usually blows them into our lakes where they become saturated and sink to the bottom. As they decompose they turn into silt and we lose depth and square footage of our lakes. As the leaves decompose it affects the way we have to treat our lakes as well. Before you purchase fertilizer for your lawns, please consider buying fertilizer without phosphorous. Most lawns don't need it and the runoff negatively affects the chemistry of our lakes. It also promotes weed growth in the lakes. Phosphorous free fertilizer is available at most places that carry fertilizer. The center # in the 3 # set on the fertilizer bag represents the amount of phosphorous it contains. If you have a lawn service fertilize for you, please tell them that you don't want phosphorous fertilizers. Another issue that happens all too often is some owners and lawn maintenance companies have been known to blow their clippings into our lakes. The grass breaks down and becomes silt as well. A lot of our properties are 2nd homes and don't get as much attention as they might if their owners were here all the time.

We feel if everyone understood the long term ramifications of not taking care of the leaves and clippings properly we would have a huge difference in the amount of silt we generate each year. Removing silt from the lake is extremely costly. So, we are asking everyone's help to take care of your leaves and clippings and help us to communicate the importance to all owners to do so as well.

Thank you,

Your Sugar Springs Lakes Committee

BOATING ON LAKE LANCELOT AND LAKE LANCER OPERATING REGULATIONS & RULES OF THE ROAD



Safety is the primary consideration to having a safe and enjoyable outing. The excitement, fun, and the thrills come in at a distant second. Enjoy our lakes!

Township ordinance prescribes slow/no wake speeds between the hours of 7:30 pm to 11:00 am daily.

A person shall not operate a Personal Watercraft (PWC) during the period that begins one (1) hour before sunset and ends at 8:00 am.

No skiing, tubing or towing without an observer.

Do not operate your boat or PWC within 100 feet of stationary objects, docks, swimming areas, shorelines or anchored boats unless operating at slow/no wake speeds.

Operate your watercraft in a counter-clockwise fashion for all water activities.

Observe all slow / no wake signs.

Do not operate your boat if you have been drinking.

Racing is prohibited.

Non-motorized craft (sailboats, rowboats, canoes, etc.) have the right-of-way over motorboats.

Any boat being overtaken has the right-of-way.

Personal Watercraft must obey the same rules as other boats.

A PWC shall not cross a wake closer than 150 feet from the boat making the wake.

No boat shall operate without proper lighting between sunset and sunrise.

Riding on the Bow is illegal if the vessel is not equipped with bow seating and is operating at greater than slow/no wake speed. It is illegal to ride on the gunwale.

Persons born after December 31, 1978, may not operate a PWC unless they have obtained a boating safety certificate.

The rider on a PWC is not to be sitting ahead of the driver (pg 23) of the boater safety booklet

BOATING ON LAKE LANCELOT AND LAKE LANCER OPERATING REGULATIONS & RULES OF THE ROAD

Safety is the primary consideration to having a safe and enjoyable outing. The excitement, fun, and the thrills come in at a distant second. Enjoy our lakes!

Township ordinance prescribes slow/no wake speeds between the hours of 7:30 pm to 11:00 am daily.

A person shall not operate a Personal Watercraft (PWC) during the period that begins one (1) hour before sunset and ends at 8:00 am.

No skiing, tubing or towing without an observer.

Do not operate your boat or PWC within 100 feet of stationary objects, docks, swimming areas, shorelines or anchored boats unless operating at slow/no wake speeds.

Operate your watercraft in a counter-clockwise fashion for all water activities.

Observe all slow / no wake signs.

Do not operate your boat if you have been drinking.

Racing is prohibited.

Non-motorized craft (sailboats, rowboats, canoes, etc.) have the right-of-way over motorboats.

Any boat being overtaken has the right-of-way.

Personal Watercraft must obey the same rules as other boats.

A PWC shall not cross a wake closer than 150 feet from the boat making the wake.

No boat shall operate without proper lighting between sunset and sunrise.

Riding on the Bow is illegal if the vessel is not equipped with bow seating and is operating at greater than slow/no wake speed. It is illegal to ride on the gunwale.

Persons born after December 31, 1978, may not operate a PWC unless they have obtained a boating safety certificate.

The rider on a PWC is not to be sitting ahead of the driver (pg 23) of the boater safety booklet

Lake Lancer

An ordinance to regulate the speed of vessels and to provide for the safe use of the waters in Butman Township, Gladwin County: enacted under the authority of Act 303, Public Acts of 1967, as amended (M.S.A. 18.1287 (17)), being identical to State Administrative Rules filed in the Office of the Secretary of State.

THE TOWNSHIP OF BUTMAN ORDAINS:

SECTION I

All words and phrases used in this ordinance shall be construed and have the same meanings as those words and phrases defined in Act 303, P.A. 1967, as amended, M.S.A. 18.1287 (8).

SECTION II

Regulation No. 26, Gladwin County.

R 281.726.1. **Lake Lancer** slow—no wake speed zone.

Rule 1. On the waters of Lake Lancelot and the canals and channels connected thereto, section 16, 17, and 20; T20N, R1W, Butman Township, Gladwin County, it is unlawful for the operator of a vessel to exceed a slow—no wake speed when within 100 feet of any shore, dock, raft, buoyed or occupied bathing area, or vessel moored or at anchor, except when water skiers are being picked up or dropped off, if that operation is otherwise conducted with due regard to the safety of persons and property and in accordance with the laws of this state.

SECTION III

All other ordinances or parts of ordinances in conflict herewith are hereby repealed.

SECTION IV

Violations of this ordinance are a misdemeanor and may be punished by a fine not to exceed one hundred dollars (\$100.00) together with costs of prosecution or imprisonment in the county jail or

Ordinance No. 2A – Speed of Vessels and Safe Use of Waters

Butman Township, Gladwin County, Michigan

Lake Lancelot

An ordinance to regulate the speed of vessels and to provide for the safe use of the waters in Butman Township, Gladwin County: enacted under the authority of Act 303, Public Acts of 1967, as amended (M.S.A. 18.1287 (17)), being identical to State Administrative Rules filed in the Office of the Secretary of State.

THE TOWNSHIP OF BUTMAN ORDAINS:

SECTION I

All words and phrases used in this ordinance shall be construed and have the same meanings as those words and phrases defined in Act 303, P.A. 1967, as amended, M.S.A. 18.1287 (8).

SECTION II

Regulation No. 26, Gladwin County.

R 281.726.1. **Lake Lancelot:** slow—no wake speed zone.

Rule 1. On the waters of Lake Lancelot and the canals and channels connected thereto, section 16, 17, and 20; T20N, R1W, Butman Township, Gladwin County, it is unlawful for the operator of a vessel to exceed a slow—no wake speed when within 100 feet of any shore, dock, raft, buoyed or occupied bathing area, or vessel moored or at anchor, except when water skiers are being picked up or dropped off, if that operation is otherwise conducted with due regard to the safety of persons and property and in accordance with the laws of this state.

SECTION III

All other ordinances or parts of ordinances in conflict herewith are hereby repealed.

SECTION IV

Violations of this ordinance are a misdemeanor and may be punished by a fine not to exceed one hundred dollars (\$100.00) together with costs of prosecution or imprisonment in the county jail or

Regulation No. 26 – GLADWIN COUNTY

Wc-26-95-002 *Lake Lancelot*: HOURS FOR HIGH SPEED BOATING

On the water of lake Lancelot, all within sections 15, 16, 17, 20, 21 and 29, T.19N, T. 20N, R.1 W, Butman Township, Gladwin County, it is unlawful between the hours of 6:30 p.m. and 10 a.m. of the following day to:

A. Operate a vessel at high speed

B. Have a tow or otherwise assist in the propulsion of a person on water skis, a water sled, kite, surfboard, or other similar contrivance.

The hours should be 7:30 p.m. to 11:00 a.m. of the following day when Eastern Daylight Savings Time is in effect. “High speed boating” is defined by the Marine Safety Act to mean a speed at or above which a motorboat reaches a planning condition.

PWC Operation Rules *

*per 2017 Boating Michigan Course from MI DNR

Who may operate a Personal Watercraft (PWC)

- ◆ Those less than 14 years of age may NOT legally operate a PWC
- ◆ Those 14 and 15 years of age may operate a PWC legally Only if they have obtained a boating safety certificate and,....
 - He or she is accompanied on board by his or her parent or legal guardian or by a person at least 21 years of age who has been designated by the parent or legal Guardian OR...
 - He or she is operating or riding the PWC at a distance of not more than 100 feet from his or her parent or legal guardian or from a person at least 21 years of age who has been designated by the parent or legal guardian.
- ◆ Those at least 16 years of age and born after December 31, 1978, may operate a PWC legally ONLY IF they have obtained a boating safety certificate.
- ◆ Those born on or before December 31st, 1978, may operate a PWC legally without restrictions.

Requirements Specific to Personal Watercrafts (PWCS)

In addition to adhering to all boating laws, personal watercraft (PWC) operators have requirements specific to their vessel

- ◆ Each person riding on or being towed behind a PWC must wear a U.S. Coast Guard-approved wearable Type I, II, or III PFD. Inflatable PFD's may not be used.
- ◆ You may not allow a child under 7 years of age to ride on or be towed behind a PWC unless with a parent, or legal guardian or a designee of the parent or legal Guardian.
- ◆ The lanyard of a PWC'S engine cut-of switch must be attached to the person, clothing or PFD of the operator.
- ◆ It is illegal to operate a PWC during the period that begins at sunset and ends at 8 :00 am (sunset) means that time determination by the national weather service.
- ◆ PWC'S must be operated in a reasonable and prudent manor at all times, for example, the following operations are illegal:
 - Jumping the wake of another vessel unnecessarily close to the other vessel
 - Weaving your PWC through congested traffic.

- Swerving at the last possible moment in order to avoid a Collision.
- ◆A PWC must be operated at a “slow, no wake speed” if crossing within 150 feet behind another vessel unless the other is also a PWC.
- ◆You may not operate a PWC within 200 feet of a Great Lakes shoreline unless traveling at a “slow, no wake speed” perpendicular to the shoreline.
- ◆You may not operate a PWC in waters less than two feet deep unless you are operating at a “slow, no wake speed” or are docking or launching your PWC.
- ◆It is illegal to harass wildlife or disturb aquatic vegetation with your PWC.

Other PWC Considerations

- ◆Regulations concerning PWC'S can vary from state to state.
- ◆A PWC is very maneuverable and responsive to slight turns of the steering control. At high speeds, a quick turn can make the PWC unstable, causing the operator and any passenger's to fall off. This is why most state's require that everyone aboard a PWC wear a PFD.
- ◆Any passengers on a PWC should be able to hold a securely to the person in front of them or to the handholds, while keeping both feet firmly to the foot rests. Children who are too small to be able to do this should not ride.
- ◆**A passenger on a PWC should never be seated in front of the operator**
- ◆Keep hands, feet, loose clothing, and hair away from the pump intake area. Before cleaning debris front the pump intake, be sure to shut off the engine.
- ◆The jet of water exiting the steering nozzle at the rear of the PWC can cause severe internal injuries. Anyone riding on a PWC should wear a wetsuit or other clothing that provides similar protection. Also, keep everyone clear of the steering nozzle unless the PWC is shut off.
- ◆Frequently inspect your PWC electrical systems (e.g. starter and engine gauge connection) to ensure there is no potential for electrical spark. This is important because gas fumes could collect in the engine compartment and an explosion could occur if a spark from the electrical system ignited the fumes. After, fueling sniff the engine compartment for any evidence of gas fumes.
- ◆Never exceed the manufactures recommended capacity for your PWC.
- ◆Know your limits, and ride according to your abilities.

Who May Operate a Boat

.Those less than 12 years of age

May operate a boat powered by a motor of no more than 6 horsepower legally without restriction

May operate a boat powered by a motor of more than 6 horse power but no more than 35 horsepower legally **only if** they:

Have been issued a boating safety certificate and have it on board the boat **and....**

Are directly supervised on board by a person at least 16 years of age

May not operate a boat powered by a motor of more than 35 horsepower legally under any condition

.Those born on or after July 1, 1996, may operate a boat legally only if they have been issued a boating safety certificate and have it on board the boat.

.Those born before July 1, 1996 may operate a boat legally without restrictions

Starry Stonewort— Exotic Plant WATCHLIST

Starry stonewort has been quickly spreading throughout Michigan and is one of the primary focuses of management on Lake Lancelot and Lancer. Starry stonewort (*Nitellopsis obtusa*) looks like a rooted plant but it is actually an algae. The plant is native to Europe and Asia and was first discovered in the St. Lawrence River in 1978. In 1983, it was found in the Detroit River and has since infested many Michigan lakes. Starry stonewort resembles the native aquatic plant *Chara*. Unlike *Chara*, which is generally considered to be a beneficial plant, starry stonewort has a tendency to inhabit deeper portions of the lake and can form dense blankets several feet thick. These mats can severely impede navigation and limit growth of more beneficial plants. Starry stonewort anchors to the sediments through rhizoids (primitive root structures) which can also absorb nutrients. Like *Chara*, starry stonewort also absorbs nutrients from the water through its cell walls. Starry stonewort has tiny, star-shaped, tan colored reproductive structures called bulbils that are firm to the touch when compared to its soft branches. These reproductive bulbils have been shown to stay viable for several years in lake sediments. It is unclear what effects starry stonewort may have on a lake's fishery. However, the encroachment of starry stonewort into fish spawning beds may be a cause for concern. Both algaecides and mechanical harvesting appear to be somewhat effective in controlling starry stonewort. However, given its propensity to produce massive amounts of growth, efforts to keep this invasive algae at bay will be difficult and potentially expensive. We are constantly on the lookout for new infestations of SSW for quick action. Please keep your eyes on the look out!

Riparian Responsibilities

Yes, if you live on a lake, YOU have responsibilities. Properly maintaining your lawn near the lake is an essential part to a healthy aquatic ecosystem. Some ways you can help your waterbody include:

- **Do not feed the ducks and geese. Remove dog, geese and duck droppings from lawns, docks, etc. Excess feces will increase nutrients within the lake. Please, do not sweep it into the lake!**
- **Create a natural buffer close to the water's edge and remove grass/turf touching the water's edge. A natural setting will filter excess nutrients from entering the water and help decrease erosion. The greenbelt should consist of native plant varieties of shrubs, flowers or trees that do not shed their foliage into the water. Natural buffers are also an excellent way to deter geese from making a stop on your beach front. Geese do not like areas where they cannot see the predators coming towards them.**
- **If you do fertilize make sure you are using Phosphorus free fertilizer. One pound of phosphorous may produce over 775 pounds of algae—"The slimy green stuff". If you must fertilize, apply nitrogen fertilizer when the grass is actively growing to minimize loss of nutrients to nearby waters. Avoid application of fertilizer prior to rainy days.**
- **RAKE YOUR BEACH! Remove aquatic plants, leaves/branches and other debris that washes up along the lakeshore so less decomposition occurs in or near the lake.**
- **Always use silt fences when building a new home or doing any yard-work that would cause erosion. Encourage the use of stone, brick and similar porous materials when building a landscape to minimize urban water collection.**
- **Keep all burn piles and debris piles away from lake. Do not burn near the water. The ash is concentrated nutrients!**

Sugar Springs Lake News

Newsletter Produced by PLM Lake & Land Management Corp. Spring 2019



Lake Managers
Bre Grabill & Casey Shoaff
PLM Lake & Land Management Corp.
P.O. Box 424, Ewart, MI 49631
Phone (800) 382-4434 www.plmcorp.net

NOTICE

Lake Lancer/Lancelot 2019 Treatment Program

The property owners in this area are planning to have the waters chemically treated to control lake weeds and/or algae. This notice is being circulated in accordance with Department of Environmental Quality (DEQ) procedures. Due to the uncertainty of weather, the treatment schedule is approximate. Please watch your shoreline for the posting of the 8.5 x 11 inch, yellow or green signs. The signs will indicate the date of the treatment, the products used, and any restrictions on the use of treated water for swimming, watering lawns, etc. One or more treatments involving water restrictive products may be applied. Please be aware that only products approved by the State of Michigan and the Federal government are being used. We have experienced **no adverse effects on people, fish, wildlife or domestic pets since applying these products.** We anticipate using one or more of the products listed. Please read the restrictions. Again, the restrictions that apply to the products actually used in a particular treatment will be found on the signs posted on the day of treatment.

2019 Proposed Treatment Plan

Lake Lancer and Lancelot have very different plant communities and each lake is independently managed for those plants with a focused plan. Lake Lancelot has an infestation of Eurasian watermilfoil and Curlyleaf pondweed. Lake Lancelot has fewer native plant species present and a large focus of the program is improving the native plant community for the overall health of the lake and fishery. Lake Lancer has an infestation of Variable leaf milfoil as well as EWM and Curlyleaf pondweed. The native plant community in Lake Lancer is diverse and some species do cause a recreational concern mid season. Focus is being made on those species and prioritizing management to maintain diversity and reduce density when able. PLM will be aggressively managing each lake using the latest technologies to ensure the best possible management program is offered to your association. While we are working at controlling numerous plants and algae and that growth will vary seasonally with weather; we encourage all residents to assist in the management your lake frontage with promoting healthy lake front living practices (reducing fertilizers, green belts, removing debris, raking your beach, etc). Let's all work together to continue to improve your beautiful lakes!

WATER USE RESTRICTIONS

- **Navigator 1,4-D:** Swimming or bathing: 1 day. Household use, irrigation, lawn and turf: 0 Days. Growing crops and non-crops ("greens"): Irrigate or less away indicates 100 gal or less. Pesticide water: Irrigate or less away. In-lake section 41 job.
- **Sculpin GZ, 4-d amine:** Swimming or bathing: 1 day. Household use, irrigation, lawn and turf: 0 Days. Non-crops ("greens"): 2-14 Days depending on treatment conditions. Growing crops: easy or less than 100gal. Livestock watering: N/A.
- **Renovate/Triclopyr/Navitrol:** Swimming or bathing: 1 day. Irrigation of Established lawn and turf: 0 Days. Household use & Irrigation including greens: 100 days or one easy alternative product to be non-tolerable.
- **Florpyrauxifen-Benzyl/ProflaCOR:** Swimming or bathing: 1 day. Household use, irrigation, lawn and turf: 0 Days. Non-crops ("greens"): 2-14 Days depending on treatment conditions. Growing crops: easy or less than 100gal. Livestock watering: N/A.
- **Fluridone/Sonar AS:** Swimming or bathing: 1 day. Domestic water use and irrigation of turf & ornamentals or Crop irrigation: 30 days or until phd use below Spc with away testing.
- **Diquat dibromide/Tribone:** Swimming or bathing: 1 day. Animal consumption of treated water: 1 day. Domestic water use and irrigation of turf & ornamentals: 3 days. Crop irrigation: 5 days.
- **Scingeray:** Swimming or bathing: 1 day. Animal consumption of treated water: 1 day. Domestic water use and irrigation of turf & ornamentals: 14 days. Crop irrigation: 14 days.
- **Hydrothol 191/Dimethylalkylamine salt of Endothal/ Aquathol K/Dipotassium salt of Endothal:** Swimming or bathing: 1 day. Household use, irrigation, livestock watering: 2 weeks.
- **Dipotassium salt of Endothal/ Diquat Dibromide/ AquaStrike:** Swimming or bathing: 1 day. Animal consumption of treated water: 1 day. Domestic water use and irrigation of turf & ornamentals: 3 days. Household use, irrigation, livestock watering: 2 weeks.
- **Flumioxazin/Clipper, Propeller, Schooner:** Swimming or bathing: 1 day. Domestic water use and irrigation of turf & ornamentals: 3 days. Crop irrigation: 5 days.
- **Nautique/copper carbonate, Kumsen/copper as elemental:** Swimming or bathing: 1 day.
- **Habitat, Imazapyr:** Swimming or bathing: 1 day. Irrigation: 100 days unless away indicated a less or 1ppb or less.
- **PLM Blue, Cygnat, Select, water dye (tracer), Copper Sulfate, copper sulfate, Gamine Plus-Ultra, Captain-XTR, SeClear and SeClear G, wet chabed copper, Cygnat Plus, PolyAm: Aquasim: ammonia & non-oxo surfactants, Aquasticker, M.D. pellets, granules, naturally occurring bacteria, PLM Enzyme, cyanus. NO RESTRICTIONS.**

*Certified Applicators: Schwere Adams, Randall Brazdon, Jason Bredson, Jaime Conroy, Bill DeWick, Jeff Fisher, Christopher Garner, Ben-Ante Gribbl, Dustin Gribbl, Steve Henson, Kyle Heath, Jack Hertz, Jacob Ince, Adam Kahn, Michael Krueger, James Lee, Anna Lindquist, Blake Maloney, Casey Melis, Michael Pella, Gary Pelt, Eric Reed, Colton Rosen, Cameron Rothman, James Scherer, Arian Schermerhorn, Ben Schermerhorn, Casey Smith, Liane Sage, Keith Sellman, Jeff Tolan, Andy Tomaszewski, Dennis Waggood, Andrew Wenberg.

2019 Tentative Treatment Schedule

Treatments will be occurring throughout the summer months, beginning in May through September. Please watch your shoreline for posting signs with specific restrictions. Please also note that you will see PLM on your lake many times this summer. We will not always be treating the lake, but performing many surveys, water quality testing, etc. Thank you for your understanding as we work to preserve and protect your lakes. The following TENTATIVE SCHEDULE is being provided so everyone is aware of the Plan of Action for Sugar Springs this season. Please be aware that many factors could adjust this schedule and it is only tentative. We do our best to stick with this schedule, but plant growth, weather, permits, etc. all impact this schedule.

Lake Lancelot will be having a separate schedule this year as this lake will be receiving a lake wide Sonar Treatment, similar to the treatment a few years ago. Because of this, the lake treatment dates may differ throughout the year. The dates have been tentatively scheduled for the following weeks of:

Lake Lancelot

May 13: Tentative Sonar Treatment*
 May 27: Algae, tentative Sonar Treatment*
 June 17: Survey, tentative Sonar Treatment*
 July 15: Survey, Algae Treatment
 August 12: Survey, Algae Treatment
 September 3: AVAS Survey both lakes

*these weeks are subject to change

Lake Lancer

May 13: Survey
 May 20: Weed & Algae Treatment
 June 17: Survey
 June 24: Weed & Algae Treatment
 July 15: Survey
 July 22: Weed & Algae Treatment
 August 12: Survey
 August 19: Weed & Algae Treatment

www.plmcorp.net

New Boating and Fishing Laws to Prevent the Introduction and Spread of Invasive Species

Michigan's Natural Resources and Environmental Protection Act (Act 451 of 1994) Part 413 has been amended with changes for boaters and anglers that take effect March 21, 2019. The changes are intended to strengthen protection for Michigan waterways against the introduction and spread of aquatic invasive species. Article and picture courtesy of Michigan.gov

What boaters need to know: stop aquatic hitchhikers.

Prior to the amendment, the law only required that a person not place watercraft or trailers in the waters of Michigan if an aquatic plant is attached. In addition to this requirement, the new changes require all of the following prior to transporting any watercraft over land:

Removing all drain plugs from bilges, ballast tanks, and live wells.

Draining all water from any live wells and bilges.

Ensuring that the watercraft, trailer, and any conveyance used to transport the watercraft or trailer are free of aquatic organisms, including plants.

This means that after trailering boats, and before getting on the road, boaters must pull plugs, drain water and remove plants and debris.

Violation of the law is a state civil infraction and violators may be subject to fine up to \$100.

What anglers need to know: Don't dump your bait

For anglers, these amendments codify the Michigan DNR's Fisheries Order 245 regarding the release of baitfish, collection and use of baitfish and cut bait, and release of captured fish, specifically:

A person shall not release baitfish in any waters of this state. A person who collects fish shall not use the fish as bait or cut bait except in the inland lake, stream, or Great Lake where the fish was caught, or in a connecting waterway of the inland lake, stream, or Great Lake where the fish was caught, if the fish could freely move between the original location of capture and the location of release.

A person, who catches fish other than baitfish in a lake, stream, Great Lake, or connecting waterway shall only release the fish in the lake, stream, or Great Lake where the fish was caught, or in a connecting waterway of the lake, stream, or Great Lake where the fish was caught, if the fish could freely move between the original location of capture and the location of release.

Whether purchased or collected, unused baitfish should be disposed of on land or in the trash – never in the water. Any baitfish an angler collects may be used only in the waters where it was originally collected.

Anglers who are catching and releasing fish should only release the fish back into the same water or in a connecting body of water the fish could have reached on its own.

Violation of the law is a state civil infraction and violators may be subject to fine up to \$100.

What you should do:

To comply with the law and prevent the introduction and spread of aquatic invasive species, boaters should:

CLEAN boats, trailers and equipment. **DRAIN** live wells, bilges and all water - pull all drain plugs.

DRY boats and equipment. **DISPOSE** of unwanted bait in the trash.



New Requirements for Michigan Boaters and Anglers to Prevent the Introduction and Spread of Aquatic Invasive Species

February 28, 2019



Michigan's Natural Resources and Environmental Protection Act (Act 451 of 1994) Part 413 has recently been amended with changes for boaters and anglers that take effect March 21, 2019. The changes are intended to strengthen protection for Michigan waterways against the introduction and spread of aquatic invasive species. Prior to the amended changes, the law only required that a person not place watercraft or trailers in the waters of Michigan if an aquatic plant is attached. In addition to this requirement, the new changes require all of the following prior to transporting any watercraft over land:

- Removing all drain plugs from bilges, ballast tanks, and live wells
- Draining all water from any live wells and bilges
- Ensuring that the watercraft, trailer, and any conveyance used to transport the watercraft or trailer are free of aquatic organisms, including plants

This means that after trailering boats, and before getting on the road, boaters must pull plugs, drain water and remove plants and debris. Additionally, the new amended law also incorporates requirements from Michigan's Department of Natural Resources' Fisheries Order 245 that will also help to prevent the introduction and spread of aquatic invasive species as well as fish diseases:

- A person shall not release bait fish in any waters of this state. A person who collects fish shall not use the fish as bait or cut bait except in the inland lake, stream, or Great Lake where the fish was caught, or in a connecting waterway of the inland lake, stream, or Great Lake where the fish was caught if the fish could freely move between the original location of capture and the location of release.

- A person shall not release bait fish in any waters of this state. A person who collects fish shall not use the fish as bait or cut bait except in the inland lake, stream, or Great Lake where the fish was caught, or in a connecting waterway of the inland lake, stream, or Great Lake where the fish was caught if the fish could freely move between the original location of capture and the location of release.

- A person, who catches fish other than bait fish in a lake, stream, Great Lake, or connecting waterway shall only release the fish in the lake, stream, or Great Lake where the fish was caught, or in a connecting waterway of the lake, stream, or Great Lake where the fish was caught if the fish could freely move between the original location of capture and the location of release.

Violation of the law is a state civil infraction and violators may be subject to fines up to \$100.

To comply with the law and prevent the introduction and spread of aquatic invasive species, boaters should:

1. **CLEAN** boats, trailers and equipment.
2. **DRAIN** live wells, bilges and all water.
3. **DRY** boats and equipment.
4. **DISPOSE** of unwanted bait in the trash.

Join us!



CARD PARTY

Monday, October 21

6:30 pm

Activity Center



\$5 per person



Sign up in POA Office
or Activity Center Desk
by October 18

We'll be playing...

Texas Hold 'em

Euchre (need table of four)

Pinochle

Sting Your Neighbor

Hand and Foot

Any game you bring



*Dessert Buffet
Included!*



*Door
Prizes!*

Sponsored by SS Recreation Committee
Open to POA Members and Social Members

ACTIVITIES

| | |
|-------------------------------------------------------------------------------------------------------------------------------------------------------------------------------------------------------------------------------------------------------------------------------------------------------------------------------------------------------------------------------------------------------------------------------------------------------------------------------------------------------------------------------------------------------------------------------------------------------------------------------------------------------------------------------------------------------------------------------|----------------------------------------------------------------------------------------------------------------------------------------------------------------------------------------------------------------------------------------------------------------------------------------------------------------------|
| <p>What: SUGAR SPRINGS ARTISTS When: Tuesdays –Painting on Your Own Where: Activity Building Time: 10:00 AM Cost: \$10/year + Art Classes once a month at \$15 plus supplies Contact: Carole Krecioch, Coordinator caronkre@gmail.com</p> <p>Comments: Mostly two-dimensional artists in all mediums – acrylic, charcoal, graphite, oil, pastels, pen & ink, watercolors, photography, quilt art, sculpting, weaving & woodworking. Supportive and non-competitive atmosphere. We have fun trying new things and sharing art and friendship. Beginners and Newcomers most welcome!</p> | <p>What: BIBLE STUDY When: 2nd and 4th Tuesdays Where: Activity Building Time: 5:00 – 6:30 PM Cost: Member ID only Contact: Barb Clough 989-426-3571</p> <p>Comments: All faiths welcome.</p> |
| <p>What: BOCCE BALL When: June 2 to August 3, 2019 Organizational Meeting: May 22, 2019 at Activity Center</p> <p>Where: Bocce Courts Time: Teams choose Cost: \$15 + Member ID Contact: Dick Fawcett 989-426-5386 989-329-0152 dadfawcett@gmail.com</p> <p>Comments: Unable to commit for full season? Consider signing up as a substitute and try out this fun way to meet neighbors and socialize!</p> | <p>What: BRIDGE When: Monday Where: Activity Building Time: 1:00 pm Cost: \$1.00 + Member ID Contact: Ann Mastny 426-9001</p> <p>Comments: No partner needed to play.</p> |

ACTIVITIES

| | |
|----------------------------------------------------------------------------------------------------------------------------------------------------------------------------------------------------------------------------------------------------------------------------------------------------------------------------------------------------------------------------------------------------------------------------------------------------------------------------------------------------------------------------------------------------------------------------------------------------------------------------------------------------------|------------------------------------------------------------------------------------------------------------------------------------------------------------------------------------------------------------------------------------------------------------------------------------------------------------------------------------------------------------------------------------------------------------------------------------------------------------------------------------------------------------------------------------------|
| <p>What: CHICKS WITH STICKS When: 1st and 4th Thursdays Where: Activity Building Time: 10 am to 12 pm Cost: Free + Member ID Contact: Pending</p> <p>Comments: We are knitters and crocheters. Don't need to be experienced; instructor on site. For fun and meeting new friends, come join us.</p> | <p>What: CORN HOLE Bean Bag Toss When: Thursdays: Nov – March Wednesdays: June - Oct Where: Activity Center Time: 2:00 PM Cost: \$1.00 (paid out in prizes) Contact: Mike Visnaw 281-323-2214 mvisnaw@yahoo.com</p> <p>Comments: Random draw for partners, all levels of expertise welcome.</p> |
| <p>What: EUCHRE When: Monday nights Where: Activity Center Time: 7:00 pm Cost: \$1.00 / person to play, \$.25 / person prize drawing, \$1.00 per person add'l lone-hand competition plus \$.05 for each individual euchre. All money given back as prizes. +Member ID</p> <p>Contact: Mike Visnaw 281-323-2214 mvisnaw@yahoo.com</p> <p>Comments: Must have a table of 4 players to enter or you can join a substitute list.</p> | <p>What: GADABOUTS When: 1st Wednesday of month Where: Activity Building Time: Generally 9:00 AM Cost: \$10 yearly + cost of event</p> <p>Contact: Nancy Purdy 989-426-3192 napurdy50@gmail.com</p> <p>Comments: We are an active Sugar Springs women's club. We like to meet new people and Gadabout at monthly outings. We are always looking for new places to explore and have lunch.</p> |



| | |
|----------------------------------------------------------------------------------------------------------------------------------------------------------------------------------------------------------------------------------------------------------------------------------------------------------------------------------------------------------------------------------------------------------------------------------------|---------------------------------------------------------------------------------------------------------------------------------------------------------------------------------------------------------------------------------------------------------------------------------------------------------------------------------------------------------------------------------------------------------------------------------------------------------------------------------------------------------------------------------------------------------------------------------------------------------------------------------------------------------------|
| <p>What: GARDEN CLUB When: 3rd Thursday, May - October Where: Activity Building Time: 9:30 AM Cost: Free + Member ID Contact: Elaine Gagnon 989-245-8686</p> <p>Comments: More info in next issue.</p> | <p>What: HAPPY GO-GETTERS When: First Wednesday of the month Where: Meet at Sugar Springs Time: Dependent on travel time Cost: \$20 annual + cost of event Contact: Kathy Baker 989-615-2906 cell</p> <p>Comments: We are a group of Sugar Springs ladies who like to get together to visit new places, learn about our community, share a meal, and catch up with friends.</p> |
| <p>What: LADIES' HAND & FOOT</p> <p>When: Every other Friday October – April</p> <p>Where: Activity Building Time: 1:00 pm Cost: \$1.00 / person +Member ID (paid out in prize money) Contact: Sherri Visnaw 630-877- 0370 sherri.visnaw@gmail.com</p> <p>Comments: Beginners and experienced players welcome.</p> | <p>What: MACHINE EMBROIDERY CLUB When: 2nd Thursday each month Where: Activity Building Time: 11:30 AM Cost: No annual fee, but possible small monthly fee for designs, materials, etc. Must be SS Member or Social Member.</p> <p>Contact: Cathy Gossett 248-804-9277 cathy.gossett@yahoo.com</p> <p>Comments: Come join us for embroidery fun! Small group with various skill level, we always welcome new members. Individual instruction available. Whether experienced or looking for a new hobby, stop by and see what we are creating.</p> |

ACTIVITIES

| | |
|------------------------------------------------------------------------------------------------------------------------------------------------------------------------------------------------------------------------------------------------------------------------------------------------------------------------------------------------------------------------------------------------------------------------------------------------------------------------------------------------------------------------------------------------------------------------------------------------------------------------------------------------------------------------------------------------------------------------------------------------------------------------|-------------------------------------------------------------------------------------------------------------------------------------------------------------------------------------------------------------------------------------------------------------------------------------------------------------------------------------------------------------------------------------------------------------|
| <p> What: MAH JONGG When: Tuesday Where: Activity Center Time: 6:00 – 8:00 PM Cost: Member ID Contact: Karole Strieter 989-387-2614 akstrieter@gmail.com </p> <p> Comments: If you enjoy the game of Mah Jongg, this group is for you! </p> | <p> What: DOUBLES MAH JONGG When: Thursday Where: Activity Center Lancelot Room Time: 10:00 AM – 1:30 PM Cost: Member ID Contact: Mary DeMatio 989-424-0372 </p> <p> Comments: This version is played with two people. </p> |
| <p> What: PICKLE BALL When: Monday, Wednesday & Friday Where: Outdoor Courts in front of Golf Barn Time: 9:00 – 11:30 AM Cost: SS Member ID no cost to play Contact: Dave Poxon (248) 207-2955 dpoxon1@gmail.com </p> <p> Comments: We have 3 portable courts set up in the golf center parking lot. Our group of players (20) consist of all ages and experience levels. First time players can borrow a racket and team up with experienced players to explain the game, rules and etiquette. Play begins when the weather warms up and continues through colder mornings in fall. Email Dave to get your name on the contact list. </p> | <p> What: PINOCHLE When: Thursdays, starting May 9th Where: Activity Building Time: 6:30-9:30 PM Cost: \$2.00 All money returned to winners. Contact: Bob Jucewicz jjucewicz@yahoo.com </p> <p> Comments: We play single deck, either three- or four-handed, based on number of participants. </p> |

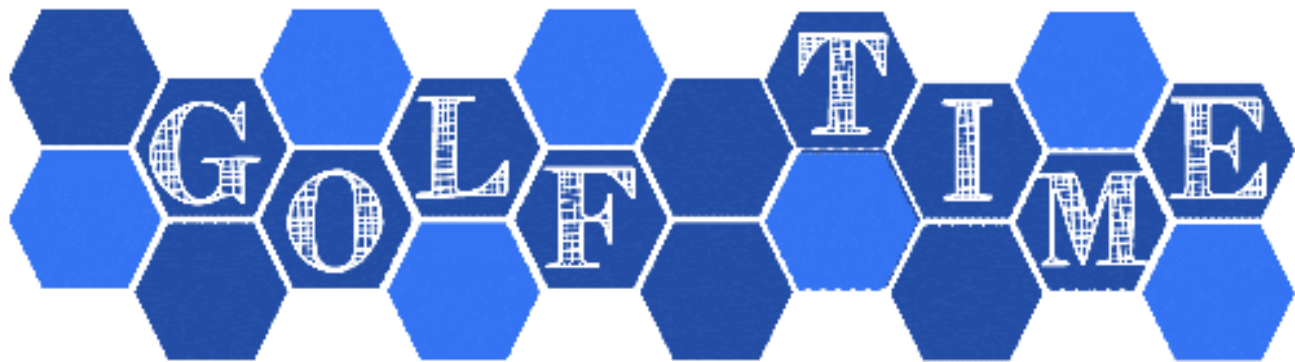


| | |
|--------------------------------------------------------------------------------------------------------------------------------------------------------------------------------------------------------------------------------------------------------------------------------------------------------------------------------------------------------------------------------------------------------------------------------------------------------------------------------------------------------------------------------------------------------------------------------------------------------------------------------------------------------|-----------------------------------------------------------------------------------------------------------------------------------------------------------------------------------------------------------------------------------------------------------------------------------------------------------------------------------------------------------------------------------------------------------------------------------------------------------------------------------------------------------------------------------------------------------------------------------|
| <p>What: STITCHERS & QUILTERS When: 2nd, 3rd, 4th Wednesdays Where: Activity Building Time: 11:30 AM Cost: \$20 / year + Member ID Contact: Kim Ehrke kehrke@gmail.com 586-405-0992</p> <p>Comments: We are a quilt guild and so much more! If you are an experienced sewist or a beginner, you'll find something here: From quilts, home dec projects, crafts, to service projects. Business meetings on 2nd Wednesday with calendars, class schedules, etc..</p> | <p>What: STRENGTH EXERCISE Early Birds to Health Class When: 2nd and 4th Tuesdays Where: Activity Center – Lancelot Rm Time: 8:30 – 9:30 PM Cost: SS Member ID or Social Member Contact: Sandy Stegeman ***</p> <p>Comments: Stretching and toning your muscles to video instructions. Some standing, some sitting in a chair. No floor exercises. Join our exercise group!</p> |
| <p>What: SUGARCIZE When: Monday, Wednesday, Friday Where: Activity Center Time: 9 AM Cost: Free with POA Member ID or Social Membership (\$50) Contact: Joyce Lewis 812-593-3915</p> <p>Comments: Everyone welcome.</p> | <p>What: TEAM TRIVIA When: Wednesdays Where: Activity Building Time: 7:00 PM Cost: \$2 / person + Member ID Contact: Jo Hagey 989-426-2177 johagey@yahoo.com</p> <p>Comments: This is a no-stress activity. We draw cards to make up teams each week and the money collected goes to pay prizes. Questions, developed by players who volunteer, cover a wide range of topics. And, we have snacks.</p> |



The logo for 'ACTIVITIES' is composed of blue hexagons arranged in a honeycomb pattern. The letters 'A', 'C', 'T', 'I', 'V', 'I', 'T', 'I', 'E', and 'S' are white and placed within the hexagons. The 'A' is in the top row, 'C' is in the second row, 'T' is in the third row, 'I' is in the fourth row, 'V' is in the fifth row, 'I' is in the sixth row, 'T' is in the seventh row, 'I' is in the eighth row, 'E' is in the ninth row, and 'S' is in the tenth row. The hexagons are arranged in a staggered grid.

| | |
|--------------------------------------------------------------------------------------------------------------------------------------------------------------------------------------------------------------------------------------------------------------------------------------------------------------------------------------------------------------------------------------------------------------------------------------------------------------------------------------------------------------------------------------|--------------------------------------------------------------------------------------------------------------------------------------------------------------------------------------------------------------------------------------------------------------------------------------------------------------------------------------------------------------------------------------------------------------------------------------------------------------------------------------------------------------------------------|
| <p>What: WATER AEROBICS When: Mon-Fri: 9:15 & 10:15 AM Tues & Thurs: 4:00 PM Where: Sugar Springs Pool Cost: Activity Center Membership or Punch Card Contact: Jo Hagey 989-426-2177 johagey@yahoo.com</p> <p>Comments: These classes are for all levels of ability. We use different CDs for instruction during the week; the average time is 50 minutes. No prior experience necessary; we love to help new members.</p> | <p>What: WATER VOLLEYBALL When: Monday, Wednesday, Friday Where: Sugar Springs Pool Time: 11:30 AM – 1:00 PM Cost: Activity Center Membership or Punch Card or \$5.00 Daily Rate Contact: Dennis Hagey 989-426-2177 denhagey@yahoo.com</p> <p>Comments: This is a fun, drop-in activity. No water skills are needed. Most play tends to be in winter months from mid-October until April or until golfing season begins.</p> |
| | |



MONDAY

Men's 18 Hole Groups (2)
Begins May 6th

Ladies 9 Hole
Weekly Sign Up

Comments: if you are interested in playing or being a sub, please contact the golf shop for more information. 989-426-1162

TUESDAY

Ladies 9 Hole Partner
18 Hole Individual League
League Fun Day May 28th
League Starts June 4th

Comments: if you are interested in playing or being a sub, please contact the golf shop for more information. 989-426-1162

WEDNESDAY

9 Hole Men's Partner League
4-5:30 PM
Informational Meeting April 10th
Deadline April 15th
First League Day May 8th

Comments: if you are interested in playing or being a sub, please contact the golf shop for more information. 989-426-1162

THURSDAY

18 Hole Men's Partner League
9 AM Start
League Play begins May 2nd

Comments: if you are interested in playing or being a sub, please contact the golf shop for more information. 989-426-1162

2019 Bocce Ball Season

10 four-person teams and six energetic substitutes made for a fun-filled bocce ball season which ended on August 8, with a ten-team tournament playoff. To celebrate the successful season, thirty-nine people attended the year-end banquet at the Hearth and the following awards were given:

Roman League Champions – Don and Mary DeMatio, Clarence and Madeline Sevillian

Sicilian League Champions – Dan and Patty Smith, Richard and Linda Fawcett

Sugar Springs Bocce Ball World Champions – Dan and Patty Smith, Richard and Linda Fawcett

BIG Pallino Rookies of the Year Award – Jack Bryan, Judy Hertlein, Vern and Nancy Purdy

The league is always looking for new members so watch for the Bocce Ball sign-up information in the March/April and May Sugar Scoop. The season is short - only eight weeks. No experience is necessary - easy and fun to learn, but a desire to have fun is required!

Call Richard Fawcett (989.426.5386) for information.





NOT ONLY FOR THE BIG THINGS
BUT ALSO FOR THE
THIRTY-TWO MILLION LITTLE THINGS.

Record-breaking donations

+

Dozens of hard-working volunteers,
including the Fit and Nifty Sugarsizers

+

Hundreds of customers

It all adds up to the best year *ever* for the
Recreation Committee's Bi-Annual Rummage Sale.
Special thanks to everyone in the equation!



BUTMAN TOWNSHIP NEWS

MOSQUITO PROGRAM

Rose Pest Solutions will once again be handling our Mosquito Program. If you need spraying on your property you need to call 1-800-437-6938

RUBBISH

For information on the rubbish pickup please go to our web page for the scheduling calendars. You can find it under the calendar pull down. You may contact Republic at 1-800-438-0966.

ROADS

The Township is working very hard to repair, crack seal and repave our roads. We budget \$20,000 each year for graveling and brining. This year we have scheduled the UltraThin Overlay on Greensboro Way, Dornie Court and Kingsway from Sugar River to Butman Road for a total of \$191,500.00

BOAT LAUNCH

Thank you to all the fishermen who have visited our boat launch. We appreciate all of you who keep this facility going.

TREASURER'S REPORT

Most of our residence already know that the tax bills are sent out as of July 1, 2019 along with the quarterly sewer bill. As always, the sewer bill and your tax bill cannot be combined in one check. If you have more than one parcel you may add them together and write one check. We do not accept credit or debit cards at the Township Office, but you may use the online site which will charge you a 3% fee. This information is on the front of the Butman Township brochure that was included with your tax bill.

ELECTIONS

Due to the changes in Proposal 3 we will be updating all permanent absentee ballots applications. This allows us to send an application for every future election for one year. You may stop in the office for a copy or go to our website. When dropping off the form we will need to see your drivers license.

2019Calendar

SUGAR SPRINGS MONDAY PICKUP

H- HOLIDAY

G-GARBAGE

Y- YARD WASTE

R-RECYCLE

| January 2019 | | | | | | |
|--------------|------|-----|-------|-----|-----|-----|
| Mon | Tues | Wed | Thurs | Fri | Sat | Sun |
| | 1 | 2 | 3 | 4 | 5 | 6 |
| 7 | 8 | 9 | 10 | 11 | 12 | 13 |
| 14 | 15 | 16 | 17 | 18 | 19 | 20 |
| 21 | 22 | 23 | 24 | 25 | 26 | 27 |
| 28 | 29 | 30 | 31 | | | |

| February 2019 | | | | | | |
|---------------|------|-----|-------|-----|-----|-----|
| Mon | Tues | Wed | Thurs | Fri | Sat | Sun |
| | | | | 1 | 2 | 3 |
| 4 | 5 | 6 | 7 | 8 | 9 | 10 |
| 11 | 12 | 13 | 14 | 15 | 16 | 17 |
| 18 | 19 | 20 | 21 | 22 | 23 | 24 |
| 25 | 26 | 27 | 28 | | | |

| March 2019 | | | | | | |
|------------|------|-----|-------|-----|-----|-----|
| Mon | Tues | Wed | Thurs | Fri | Sat | Sun |
| | | | | 1 | 2 | 3 |
| 4 | 5 | 6 | 7 | 8 | 9 | 10 |
| 11 | 12 | 13 | 14 | 15 | 16 | 17 |
| 18 | 19 | 20 | 21 | 22 | 23 | 24 |
| 25 | 26 | 27 | 28 | 29 | 30 | 31 |

| April 2019 | | | | | | |
|------------|------|-----|-------|-----|-----|-----|
| Mon | Tues | Wed | Thurs | Fri | Sat | Sun |
| 1 | 2 | 3 | 4 | 5 | 6 | 7 |
| 8 | 9 | 10 | 11 | 12 | 13 | 14 |
| 15 | 16 | 17 | 18 | 19 | 20 | 21 |
| 22 | 23 | 24 | 25 | 26 | 27 | 28 |
| 29 | 30 | | | | | |

| May 2019 | | | | | | |
|----------|------|-----|-------|-----|-----|-----|
| Mon | Tues | Wed | Thurs | Fri | Sat | Sun |
| | | 1 | 2 | 3 | 4 | 5 |
| 6 | 7 | 8 | 9 | 10 | 11 | 12 |
| 13 | 14 | 15 | 16 | 17 | 18 | 19 |
| 20 | 21 | 22 | 23 | 24 | 25 | 26 |
| 27 | 28 | 29 | 30 | 31 | | |

| June 2019 | | | | | | |
|-----------|------|-----|-------|-----|-----|-----|
| Mon | Tues | Wed | Thurs | Fri | Sat | Sun |
| | | | | | 1 | 2 |
| 3 | 4 | 5 | 6 | 7 | 8 | 9 |
| 10 | 11 | 12 | 13 | 14 | 15 | 16 |
| 17 | 18 | 19 | 20 | 21 | 22 | 23 |
| 24 | 25 | 26 | 27 | 28 | 29 | 30 |

| July 2019 | | | | | | |
|-----------|------|-----|-------|-----|-----|-----|
| Mon | Tues | Wed | Thurs | Fri | Sat | Sun |
| 1 | 2 | 3 | 4 | 5 | 6 | 7 |
| 8 | 9 | 10 | 11 | 12 | 13 | 14 |
| 15 | 16 | 17 | 18 | 19 | 20 | 21 |
| 22 | 23 | 24 | 25 | 26 | 27 | 28 |
| 29 | 30 | 31 | | | | |

| August 2019 | | | | | | |
|-------------|------|-----|-------|-----|-----|-----|
| Mon | Tues | Wed | Thurs | Fri | Sat | Sun |
| | | | 1 | 2 | 3 | 4 |
| 5 | 6 | 7 | 8 | 9 | 10 | 11 |
| 12 | 13 | 14 | 15 | 16 | 17 | 18 |
| 19 | 20 | 21 | 22 | 23 | 24 | 25 |
| 26 | 27 | 28 | 29 | 30 | 31 | |

| September 2019 | | | | | | |
|----------------|------|-----|-------|-----|-----|-----|
| Mon | Tues | Wed | Thurs | Fri | Sat | Sun |
| | | | | | | 1 |
| 2 | 3 | 4 | 5 | 6 | 7 | 8 |
| 9 | 10 | 11 | 12 | 13 | 14 | 15 |
| 16 | 17 | 18 | 19 | 20 | 21 | 22 |
| 23 | 24 | 25 | 26 | 27 | 28 | 29 |
| 30 | | | | | | |

| October 2019 | | | | | | |
|--------------|------|-----|-------|-----|-----|-----|
| Mon | Tues | Wed | Thurs | Fri | Sat | Sun |
| | 1 | 2 | 3 | 4 | 5 | 6 |
| 7 | 8 | 9 | 10 | 11 | 12 | 13 |
| 14 | 15 | 16 | 17 | 18 | 19 | 20 |
| 21 | 22 | 23 | 24 | 25 | 26 | 27 |
| 28 | 29 | 30 | 31 | | | |

| November 2019 | | | | | | |
|---------------|------|-----|-------|-----|-----|-----|
| Mon | Tues | Wed | Thurs | Fri | Sat | Sun |
| | | | | 1 | 2 | 3 |
| 4 | 5 | 6 | 7 | 8 | 9 | 10 |
| 11 | 12 | 13 | 14 | 15 | 16 | 17 |
| 18 | 19 | 20 | 21 | 22 | 23 | 24 |
| 25 | 26 | 27 | 28 | 29 | 30 | |

| December 2019 | | | | | | |
|---------------|------|-----|-------|-----|-----|-----|
| Mon | Tues | Wed | Thurs | Fri | Sat | Sun |
| | | | | | | 1 |
| 2 | 3 | 4 | 5 | 6 | 7 | 8 |
| 9 | 10 | 11 | 12 | 13 | 14 | 15 |
| 16 | 17 | 18 | 19 | 20 | 21 | 22 |
| 23 | 24 | 25 | 26 | 27 | 28 | 29 |
| 30 | 31 | 1 | 2 | | | |

Call REPUBLIC @ 1-800-438-0966 or Sharon Hobin, Clerk @ 989-426-4351 Ext. 4 if you have questions.

| January 2019 | | | | | | |
|--------------|-----|-----|------|-----|-----|-----|
| Mon | Tue | Wed | Thur | Fri | Sat | Sun |
| | 1 | 2 | 3 | 4 | 5 | 6 |
| 7 | 8 | 9 | 10 | 11 | 12 | 13 |
| 14 | 15 | 16 | 17 | 18 | 19 | 20 |
| 21 | 22 | 23 | 24 | 25 | 26 | 27 |
| 28 | 29 | 30 | 31 | | | |

| February 2019 | | | | | | |
|---------------|-----|-----|------|-----|-----|-----|
| Mon | Tue | Wed | Thur | Fri | Sat | Sun |
| | | | | 1 | 2 | 3 |
| 4 | 5 | 6 | 7 | 8 | 9 | 10 |
| 11 | 12 | 13 | 14 | 15 | 16 | 17 |
| 18 | 19 | 20 | 21 | 22 | 23 | 24 |
| 25 | 26 | 27 | 28 | | | |

| March 2019 | | | | | | |
|------------|-----|-----|------|-----|-----|-----|
| Mon | Tue | Wed | Thur | Fri | Sat | Sun |
| | | | | 1 | 2 | 3 |
| 4 | 5 | 6 | 7 | 8 | 9 | 10 |
| 11 | 12 | 13 | 14 | 15 | 16 | 17 |
| 18 | 19 | 20 | 21 | 22 | 23 | 24 |
| 25 | 26 | 27 | 28 | 29 | 30 | 31 |

| April 2019 | | | | | | |
|------------|-----|-----|------|-----|-----|-----|
| Mon | Tue | Wed | Thur | Fri | Sat | Sun |
| 1 | 2 | 3 | 4 | 5 | 6 | 7 |
| 8 | 9 | 10 | 11 | 12 | 13 | 14 |
| 15 | 16 | 17 | 18 | 19 | 20 | 21 |
| 22 | 23 | 24 | 25 | 26 | 27 | 28 |
| 29 | 30 | | | | | |

| May 2019 | | | | | | |
|----------|-----|-----|------|-----|-----|-----|
| Mon | Tue | Wed | Thur | Fri | Sat | Sun |
| | | 1 | 2 | 3 | 4 | 5 |
| 6 | 7 | 8 | 9 | 10 | 11 | 12 |
| 13 | 14 | 15 | 16 | 17 | 18 | 19 |
| 20 | 21 | 22 | 23 | 24 | 25 | 26 |
| 27 | 28 | 29 | 30 | 31 | | |

| June 2019 | | | | | | |
|-----------|-----|-----|------|-----|-----|-----|
| Mon | Tue | Wed | Thur | Fri | Sat | Sun |
| | | | | | 1 | 2 |
| 3 | 4 | 5 | 6 | 7 | 8 | 9 |
| 10 | 11 | 12 | 13 | 14 | 15 | 16 |
| 17 | 18 | 19 | 20 | 21 | 22 | 23 |
| 24 | 25 | 26 | 27 | 28 | 29 | 30 |

| July 2019 | | | | | | |
|-----------|-----|-----|------|-----|-----|-----|
| Mon | Tue | Wed | Thur | Fri | Sat | Sun |
| 1 | 2 | 3 | 4 | 5 | 6 | 7 |
| 8 | 9 | 10 | 11 | 12 | 13 | 14 |
| 15 | 16 | 17 | 18 | 19 | 20 | 21 |
| 22 | 23 | 24 | 25 | 26 | 27 | 28 |
| 29 | 30 | 31 | | | | |

| August 2019 | | | | | | |
|-------------|-----|-----|------|-----|-----|-----|
| Mon | Tue | Wed | Thur | Fri | Sat | Sun |
| | | | 1 | 2 | 3 | 4 |
| 5 | 6 | 7 | 8 | 9 | 10 | 11 |
| 12 | 13 | 14 | 15 | 16 | 17 | 18 |
| 19 | 20 | 21 | 22 | 23 | 24 | 25 |
| 26 | 27 | 28 | 29 | 30 | 31 | |

| September 2019 | | | | | | |
|----------------|-----|-----|------|-----|-----|-----|
| Mon | Tue | Wed | Thur | Fri | Sat | Sun |
| | | | | | | 1 |
| 2 | 3 | 4 | 5 | 6 | 7 | 8 |
| 9 | 10 | 11 | 12 | 13 | 14 | 15 |
| 16 | 17 | 18 | 19 | 20 | 21 | 22 |
| 23 | 24 | 25 | 26 | 27 | 28 | 29 |
| 30 | | | | | | |

| October 2019 | | | | | | |
|--------------|-----|-----|------|-----|-----|-----|
| Mon | Tue | Wed | Thur | Fri | Sat | Sun |
| | 1 | 2 | 3 | 4 | 5 | 6 |
| 7 | 8 | 9 | 10 | 11 | 12 | 13 |
| 14 | 15 | 16 | 17 | 18 | 19 | 20 |
| 21 | 22 | 23 | 24 | 25 | 26 | 27 |
| 28 | 29 | 30 | 31 | | | |

| November 2019 | | | | | | |
|---------------|-----|-----|------|-----|-----|-----|
| Mon | Tue | Wed | Thur | Fri | Sat | Sun |
| | | | | 1 | 2 | 3 |
| 4 | 5 | 6 | 7 | 8 | 9 | 10 |
| 11 | 12 | 13 | 14 | 15 | 16 | 17 |
| 18 | 19 | 20 | 21 | 22 | 23 | 24 |
| 25 | 26 | 27 | 28 | 29 | 30 | |

| December 2019 | | | | | | |
|---------------|-----|-----|------|-----|-----|-----|
| Mon | Tue | Wed | Thur | Fri | Sat | Sun |
| | | | | | | 1 |
| 2 | 3 | 4 | 5 | 6 | 7 | 8 |
| 9 | 10 | 11 | 12 | 13 | 14 | 15 |
| 16 | 17 | 18 | 19 | 20 | 21 | 22 |
| 23 | 24 | 25 | 26 | 27 | 28 | 29 |
| 30 | 31 | 1 | 2 | 3 | | |

Call REPUBLIC @ 1-800-438-0966 or Sharon Hobin, Clerk @ 989-426-4351 Ext. 4 if you have questions.

Clare Area Happenings



2019

Calendar of Events

Annual Big Brothers Big Sisters Auction: March 13th

Clare Irish Festival: March 13th - 16th

Irish Festival Craft Show: March 16th

The Great Eggstravaganza Egg Drop: April 13th

Howard's Friends Bike Ride: April 27th

Small Business Week: May 5th - 11th

2nd Annual Michigan Brain Aneurysm Awareness 5K: May 11th

Yoder's Amish Flea Market & Quilt Auction: May 17th - 18th

Clare County Arts Council Quilt Festival: May 17th - 18th

Summer Concert Series (Thursdays in City Park): June 6th - August 15th

Back to the Bricks (Car Show): June 7th

Annual Chamber Golf Outing (Eagle Glen): June 14th

City Wide Yard Sales: June 27th - June 29th

Clare Summer Music Festival-Fireworks: June 28th - 29th

Clare County Arts Council Art of Gardening Tour: July 13th

Clare Sidewalk Sales: July 19th - July 20th

Old 27 Motor Tour (Car Show): August 22nd

Yoder's Amish Flea Market & Quilt Auction: August 30th - 31st

Taste of Clare: September 21st

Clare County Arts Council Quilt Trail Ride: October 8th

Clare Spook-Tacular & Pumpkin Run 5K: October 26th

Small Business Saturday: November 30th

Christmas in Downtown Clare: December 14th



www.claremichigan.com

(989)386-2442

The Sugar Springs Stitches and Quilters would like to thank the residents of Sugar Springs for making our quilt show a rousing success! We appreciate your interest, your attendance, and your kind comments. Money raised will be used to fund our service projects within the Gladwin area, and the donations we make toward SS activities.

The viewer's choice ballots resulted in 18 winners in 6 categories. Pictured are some of the SS residents who took home first place ribbons due to your viewer's choice votes.





Classifieds

| | |
|--------------------------------------------------------------------------------------------------------------------------------------------------------------------------------------------------------------------------------------------------------------------------------------------------------------------|--------------------------------------------------------------------------------------------------------------------------------------------------------------------------------------------------------------------------------------------------------------------------------------------------------------|
| <p>FOR SALE</p> <p>12'x36' Indoor Storage Unit for Boat, Camper or Motorhome. 12' high door. On M-61 Gladwin. \$59.00 month paid annually or \$89.00 paid monthly. Scott (989) 429-2752</p> <p style="text-align: right;">9/19</p> | <p>FOR RENT</p> <p>Lake Lancelot, three bedrooms, 2 bath. Bonus game room, sleeps 15. 2,100 sq ft deck overlooking the lake. Additional fee for over 6 guests. No smoking, no pets. Call Don (586) 805-9029 or email</p> <p>Sherryjacoby@gmail.com</p> <p style="text-align: right;">10/19</p> |
| <p>FOR RENT</p> <p>Lake Lancer 165' Lakefront camping lot, Sewer, Well, Beach, Dock, available Fall 2019 & Spring 2020. Could be available for 2020 season, \$500/month, 810-625-2713</p> <p>9/19</p> | <p>FOR SALE</p> <p>1998 Artic Cat ZL500</p> <p>Only 1,300 miles, runs great.</p> <p>Only ridden on the lake.</p> <p>Includes 2 helmets and cover</p> <p>\$1,250.00</p> <p>Call (313) 670-1721</p> <p style="text-align: right;">12/19</p> |
| <p>SACRED HEART HOLIDAY BAZAAR</p> <p>Sacred Heart in Gladwin is again having it's Holiday Bazaar. This year it is November 22 & 23rd. Bazaar is 9:00 - 4:00 pm on Friday and 9:00 - 3:00 pm on Saturday</p> <p>Call Pam: (989) 426-9667 if questions</p> <p style="text-align: right;">9/19</p> | <p>FOR SALE</p> <p>Didier gas engine log splitter \$200.00</p> <p>Ryobi 21" gas lawn mower \$75.00</p> <p>Call Jeff (859-3491</p> <p style="text-align: right;">9/19</p> |



| | |
|----------------------------------------------------------------------------------------------------------------------------------------------------------------------------------------------------------------------------------------------------|------------------------------------------------------------------------------------------------------------------------------------------------------------------------------------------------------------------------------------------------------------|
| <p>FOR RENT</p> <p>Large all season lake front home. Available year-round for weekly and weekend rentals.</p> <p>Sleeps 14 with large living area</p> <p>Contact Laurie at (989) 560-8553</p> <p style="text-align: right;">5/20</p> | <p>FOR SALE</p> <p>Lakeview lot in Sugar Springs</p> <p>Lot #30 in Manchester realm. Large lot for building or camping.</p> <p>\$6,800.00</p> <p>Call (517) 712-7956 for more information</p> <p style="text-align: right;">12/19</p> |
| | |
| | |

Our Advertisers



EDGAR PAINTING
Owners

LOUIS AND JEREMY EDGAR
IN BUSINESS SINCE 1971

5450 BUTMAN RD.
GLADWIN, MI 48624

1-989-426-4265 or 989-329-5142

RESIDENTIAL • COMMERCIAL
FREE ESTIMATES

L. Dan French Builders L.L.C.
New Homes, Garages & Remodeling



989-426-1348
Fax 989-426-1978
124 Silverleaf St.
Gladwin, MI 48624
danfrench@danfrenchbuilders.com

Insurance Restoration • 24 Hour • Licensed & Insured



Randy's Plumbing
"One call does it all"
New Construction, Remodels, Repairs

Randy Pyrzewski
Master Plumber
Water Division
Owner / Serv

44 White Tail Trl.
Gladwin, MI. 48624

phone (989) 426-2244
fax (989) 426-5238



O'Day Enterprises
Roofing - Vinyl Siding - Remodeling

Steve O'Day

Phone 989-539-3757 Cell 989-429-0273

7750 Springwood Lake Rd.
Harrison, MI 48625 | soday1958@gmail.com
www.stevendayenterprises.com

INTERIOR DESIGN SERVICES
EVERYTHING FROM SIMPLE CONSULTATIONS TO A COMPLETE DESIGN PACKAGE

| | |
|--------------------------------------------------------------------------------------------------------------------------------------------------------------|-------------------------------------------------------------------------------------------------|
| Residential or Commercial New Construction or Remodels Space Planning Finish, Fixture and Furnishing selection with access to trade-only sources | Millwork, Cabinetry and Lighting Layout Design Custom Window Treatments Custom Closets |
|--------------------------------------------------------------------------------------------------------------------------------------------------------------|-------------------------------------------------------------------------------------------------|

DETAILS
design studio llc

Lindsay Richardson
NODQ Certified | 989.737.0215

ROBERT D. WILLIAMS
— CUSTOM BUILDER —

Robert D. Williams
President



950 Ritchie Road
Gladwin, Michigan 48624
Ph: (989) 426-5733
Fx: (989) 426-2101

email: rdwbuilders@gmail.com
www.rdwbuilders.com



Legacy
BUILDERS/
CONSTRUCTION

rustyedick.legacy@gmail.com

Rusty Edick Office: 989-426-6192
Owner Cell: 989-233-9847

Ponzetti's Excavating
Still serving the area since 1996

Sewers • Culverts • Ditch Enclosures
Land Clearing • Top Soil • Sand & Gravel
Driveways • Other Improvements Needs



Terry Ponzetti
989/426-2024 989/205-0763

Our Advertisers

DeLisle Start-Ups • Winterize
Sprinkler Systems
989-689-0069
989-737-9441 or 989-737-1838
Contact Dave or Greg DeLisle
for All Irrigation Needs!

INSTALLATION AND REPAIR SERVICES

DELISLE
Lawn Care, Landscaping & SNOW REMOVAL
Service: Gladwin, Clare & Midland Counties

- Residential - Commercial
- Complete Lawn Care - Landscaping
- Retaining Walls & Patios
- Ponds - Excavating
- Trimming - Trucking
- Land Clearing
- Top Soil, Sand & Gravel
- Septic Systems
- Snow Plowing & Salting
- Lawn Irrigation Systems

Dave DeLisle 989-737-9441 435-4423
Hope 989-689-9099 Rick 989-1337
Greg DeLisle 989-737-1838 Pety Ireland

OAKRIDGE
TREE SERVICE

Trimming • Removal • Portable Stump Grinding
Insurance Work • 24 Hr. Emergency Work
Voted #1 Tree Service

Liability & Worker's Comp. Insured • 24 Yrs. Experience

Rick Panetta 989-426-8741

SUGAR SPRINGS
MARINE

Sales • Service • Parts • Boat Storage

HONDA
MARINE

Manitou

HEWITT
LIFTS & ROLL-A-DOCK

(989) 246-0231

Doug Macon, Owner
Fax (989) 426-5292
www.sugarspringsmarine.com

2285 W. Sugar River Rd.
Gladwin, MI 48624

Mid-Michigan
Pest Control



11370 N. Isabella Rd
Clare, MI 48617
989-386-9622
1-800-782-0468

*Jennifer's Lawn Care &
Snowplowing, Inc.*

989-426-1542

Fully Insured
Lawn Mowing
Spring/Fall Cleanup
Thatching
Snowplowing

Wayne & Jennifer Walton
1960 Weber Rd
Gladwin, MI 48624

SECORD LAKE MARINA ON THE WATER

989-426-7700

2631 Lakeshore Dr. • Gladwin, MI 48624
WWW.SECORDLAKEMARINA.COM
email secordlakemarina@gmail.com



- Sales • Service • Parts • Storage
- Bennington Pontoons • Playcraft Pontoons
- Mercury & Yamaha Outboard Motors
- Pontoon Rentals
- Boat Lift & Docking

Scott Gratopp Sales Manager/Owner Fax 989-426-5493

Williams Lawn Care



- Professional Equipment
- 24/7 Storm Clean-up
- Mowing
- Tree Trimming
- Yard Waste Removal

Jacob Williams
989 239 0810

Culligan

better water. pure and simple.®

Culligan Mid Michigan • 989-465-9143

Our Advertisers



www.SugarSpringsRealty.com
1415 SUGAR RIVER ROAD • GLADWIN, MI 48624

**Top Listing & Selling Agent for
5+ Years in the Community
of Sugar Springs...**



*Let's get it
SOLD!*



Alice Moore
RE/MAX River Haven
989-430-0966 Cell
alicemoore1728@gmail.com

*Vast Knowledge and experience regarding
Sugar Springs, Virtual Tours, Web Based and
printed Advertising, RE/MAX Hot Air Balloon
Coordinator for Sugar Springs Fly-in Events.*



Kehoe Realty



Jim & Ivie Baker
Principal Brokers/Owners
989.426.0664 "Realtors with a Heart"

Top Ranking Web Sites & Virtual Tours!
Visit our Sugar Springs Site: www.SugarSprings.Life
Main Site: www.KehoeRealty.com

*Call and Talk to One of Our Friendly
Real Estate Team Members TODAY!*



901 N. M-18, P.O. Box 496, Gladwin MI 48624



Bone & Bailey

INSURANCE AGENCY

Mark C. Bone
President
mark@boneandbailey.com

Contact: Mark Bone, Randy Tarzwell or Joe Kreusch
312 W. Burtles Midland MI 48640 | 989-631-3511 | 989-631-8480 Fax
www.boneandbailey.com



Secord Marine Center
(989) 246-2355
www.secordmarinecenter.com
Sales - Service - Storage Inside & Outside




JOSH OSOSKI SERVICE MANAGER
FACTORY CERTIFIED TECHNICIANS
MERCURY & HONDA MOTORS

HOIST & DOCKS SOLD & INSTALLED
*** BARGE SERVICE ***



Rule's Lawn Service

Keep Your Weekends Free

Lawn Mowing • Fertilizing • Brush Hogging • Roto Tilling
Snow Removal • Grading • Culverts • Trailer Moving
Pontoon Hauling • House Watching

Mike Mahaffy
5550 File Ct.
989.426.7055

Shop
4700 N. Hockaday Rd.
989.246.7055

Our Advertisers



Lilly Pad
Home decor
www.lillypadhome.com

140 E Cedar Ave. Gladwin, Michigan 48624 • 989 256-3355
Open 10:00 to five daily - Closed Sunday



Built in the USA,
our beautiful chairs
ROCK, SWIVEL
and RECLINE
Starting under
\$800.00



HOME
FURNISHINGS
Designed for
your lake and country
lifestyle.
Furniture, Lamps,
Pictures, Rugs .

Options Home Furnishings

WE WANT TO BE YOUR HOME TOWN FURNITURE STORE

**PURCHASE ONE ITEM
AT CHIC BOUTIQUE,
GET A SECOND ITEM
50% OFF!**
(of equal or lesser value)



Excludes clearance and sale items.
Cannot be combined with any other offer.
One coupon per customer per Scoop Issue.
Expires July 2, 2014.

MUST BRING IN THIS COUPON TO RECEIVE DEAL.

CODE: CHICSUGARI

(989)246-9118 • info@riverwalkplace.net
Located in Riverwalk Place at 777 W. Cedar Ave., Gladwin, MI 48624



JERRY SUPINGER
Owner
Gsoop1225@hotmail.com
989-233-4558
Gladwin
Michigan

LAKESIDE PAINTING
Free Estimates- Insured

- Interior and Exterior Painting & Staining
- Deck Painting/Staining/Waterproofing
- Powerwashing
- 30+ Years Experience

DOCTOR PROCTOR - HANDYMAN



Dave Proctor
Hamson, MI
989-339-1000
Painting, Windows
Doors, Flooring
Mirror Plumbing & Electrical
Licensed/Insured

"Will do most anything!"

Residential & Commercial
Free Estimates

EDDIE'S WINDOW CLEANING



(989) 615-8289
982 W. Genesee Rd.
Sanford, MI 48657

Shoreline Construction & Co. LLC

Quality Work Done at an Affordable Price

* Roofing * Siding * Decks * Seawalls

* New Construction * Terrace Walls

Licensed

Insured

Aaron Jankowski, Owner
Farwell, MI

Phone: 989-588-0199

Advertising Opportunities

PERSONAL AD - SUGAR SCOOP

Date submitted: _____ Member # _____

Name: _____

Address: _____

Phone: (_____) _____

Amount paid: _____ Cash or Check (circle one)

Place ad in the following issues - \$5.00 per Issue

Circle Issues: Jan / Feb Mar / Apr May June July Aug Sept / Oct Nov / Dec

Mail Form and Payment to:

Sugar Scoop Editor 5477 Worthington Ct. Gladwin, MI 48624

Use the space below or attach a separate paper stating exactly how you want your ad to appear using 25 words or less.
